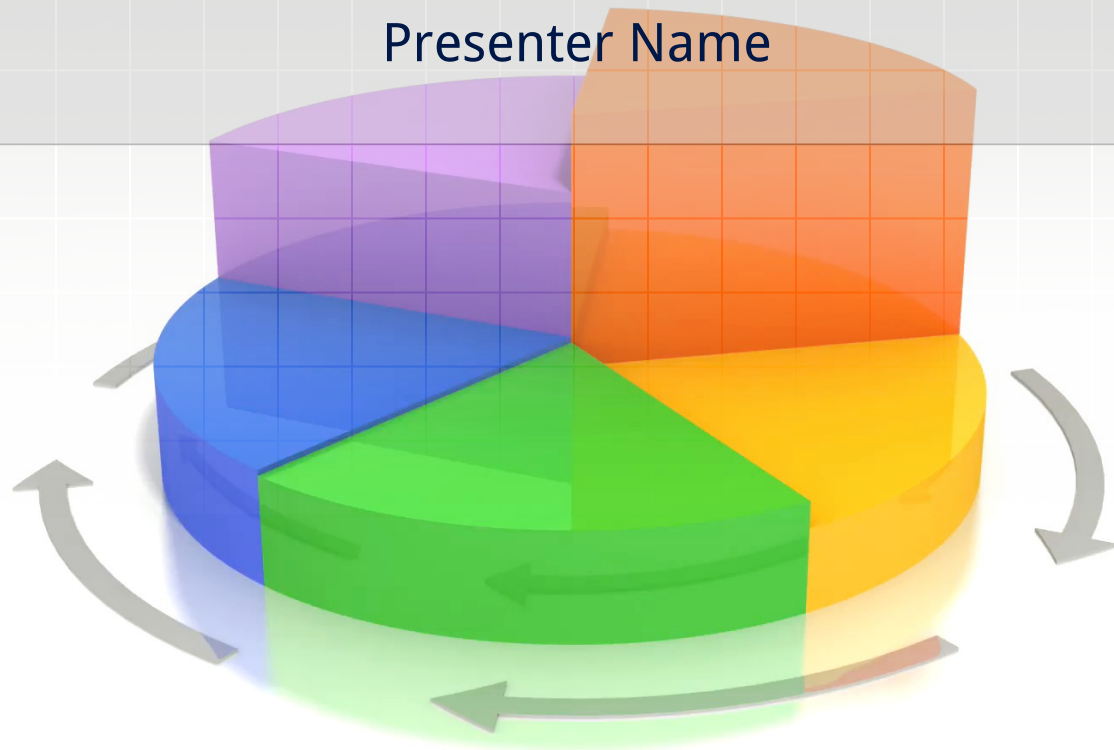


**Your Presentation Name**  
Presenter Name



By [PresenterMedia.com](http://PresenterMedia.com)

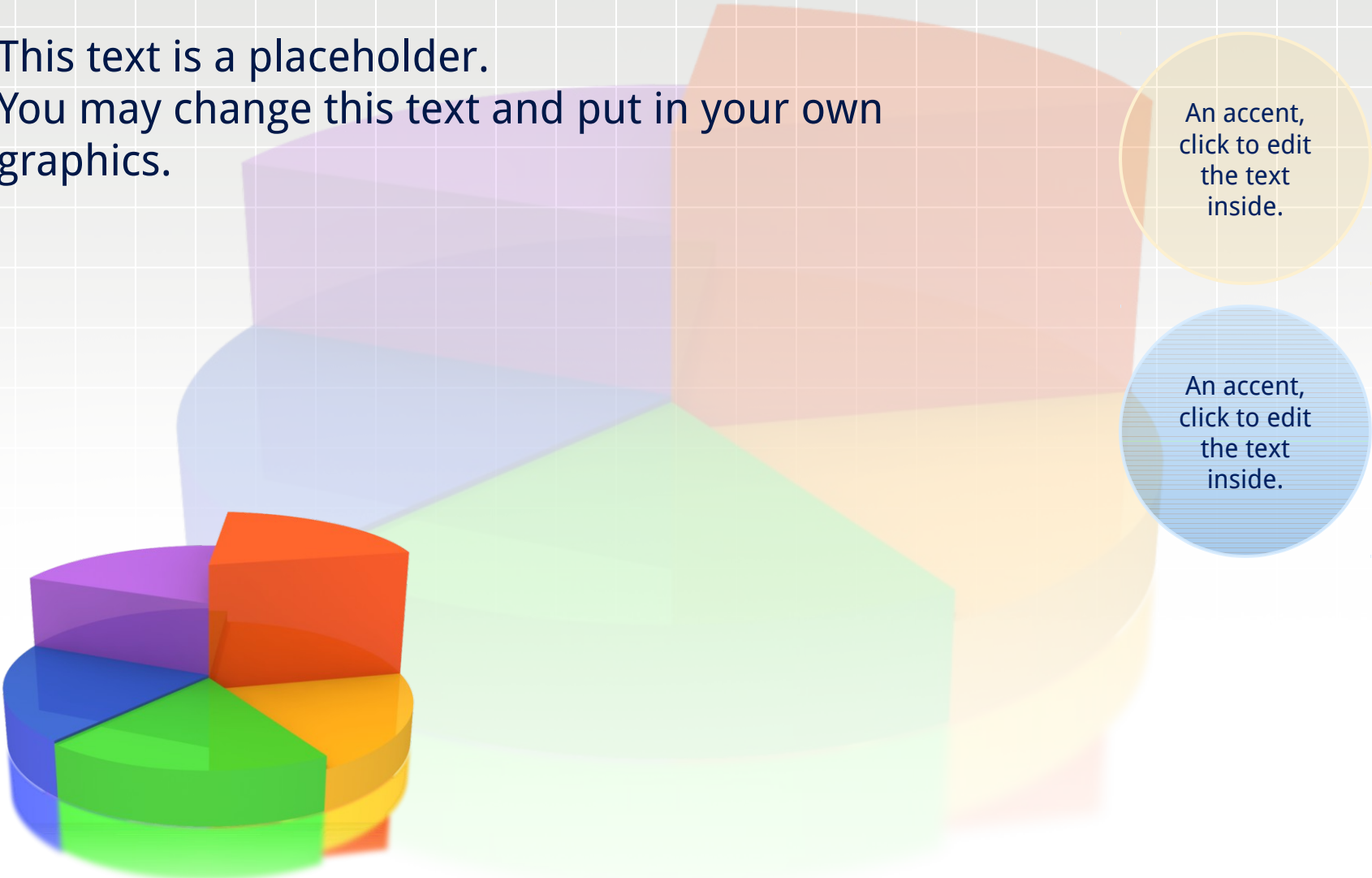
## Main Content Page Layout

This text is a placeholder



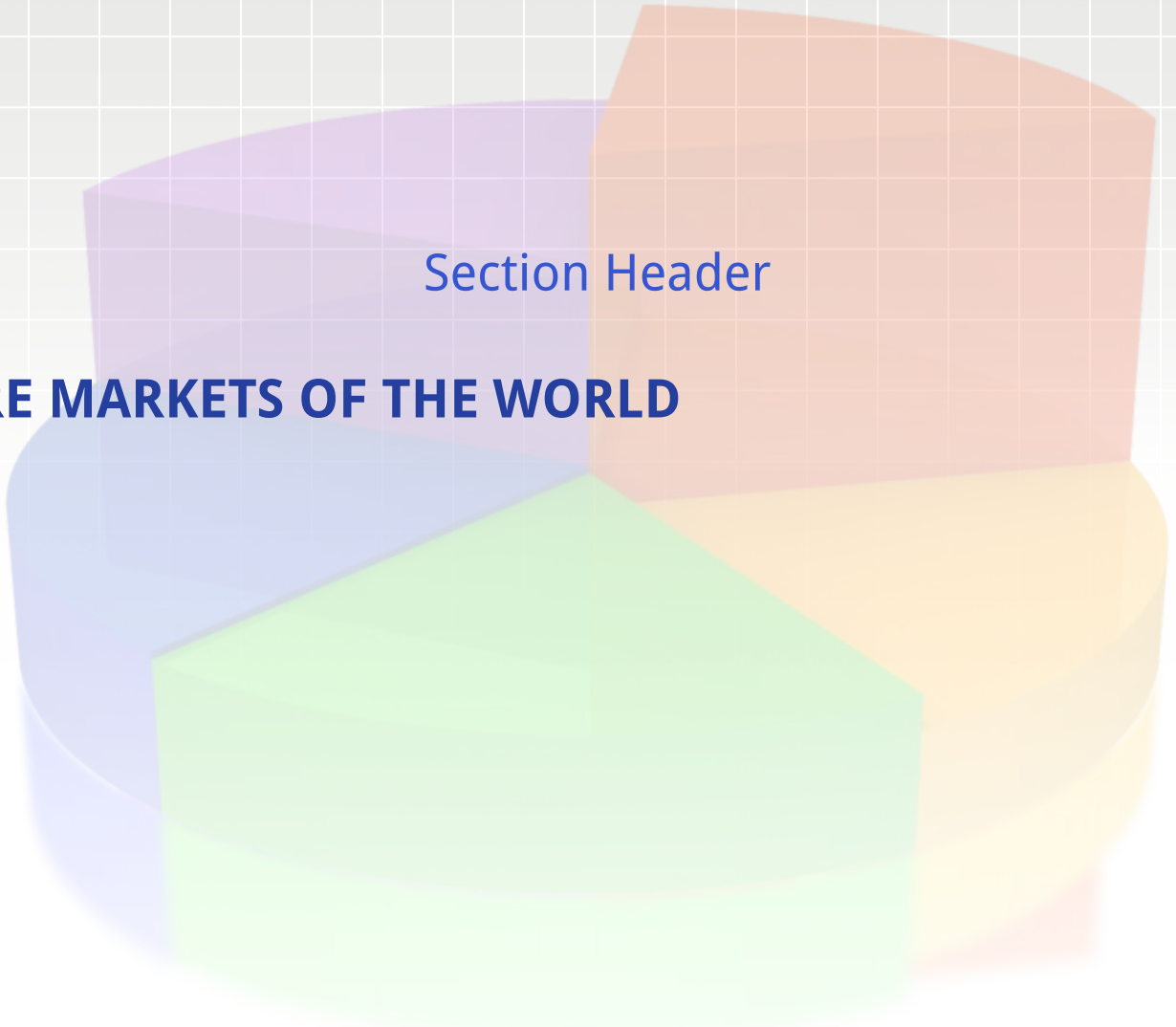
## Alternate Static Content Page

- This text is a placeholder.  
You may change this text and put in your own graphics.



An accent,  
click to edit  
the text  
inside.

An accent,  
click to edit  
the text  
inside.



Section Header

# FUTURE MARKETS OF THE WORLD

# Your Plan or Summary Layout

Second line add more text here or delete

Topic 1

Discussion Item One – A Placeholder for text  
Add a second line of text here

Topic 2

Discussion Item One – A Placeholder for text  
Add a second line of text here

Topic 3

Discussion Item One – A Placeholder for text  
Add a second line of text here

Topic 4

Discussion Item One – A Placeholder for text  
Add a second line of text here

Topic 5

Discussion Item One – A Placeholder for text  
Add a second line of text here

Topic 6

Discussion Item One – A Placeholder for text  
Add a second line of text here

# A Two Column Page Layout

A Second line of text can go here.

## QUICK FACT

A content placeholder. Use for text, graphics, tables and graphs. You can change this text or delete it. A content placeholder. Use for text, graphics, tables and graphs. You can change this text or delete it. A content placeholder. Use for text, graphics, tables and graphs. You can change this text or delete it.

A content placeholder. Use for text, graphics, tables and graphs. You can change this text or delete it.

## QUICK FACT

A content placeholder. Use for text, graphics, tables and graphs. You can change this text or delete it. A content placeholder. Use for text, graphics, tables and graphs. You can change this text or delete it. A content placeholder. Use for text, graphics, tables and graphs. You can change this text or delete it.



# Comparison Page Layout

CLICK HERE TO ADD TEXT

THIS IS A PLACE HOLDER FOR ITEM ONE. ITEM ONE CAN BE TEXT, A PICTURE, GRAPH, TABLE, ETC. THIS IS A PLACE HOLDER FOR ITEM ONE. ITEM ONE CAN BE TEXT, A PICTURE, GRAPH, TABLE, ETC.



CLICK HERE TO ADD TEXT

**Change the YOUR LOGO area below by editing the Slide Master under the view tab.**

**This is a place holder for item one. Item one can be text, a picture, graph, table, etc.**

**All the graphical elements can be moved, copied, or deleted from the slide master view.**

## Two Picture Page Layout

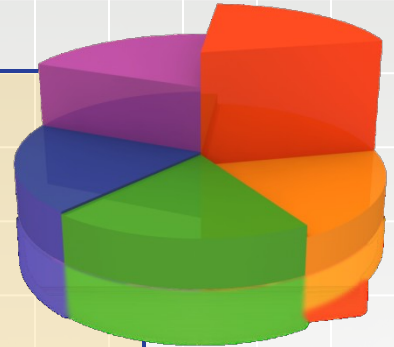
A second line of text here

A placeholder for text for the first picture.

More information can be added here by changing this text. You

modify this page's formatting editing the page layouts under slide master view.

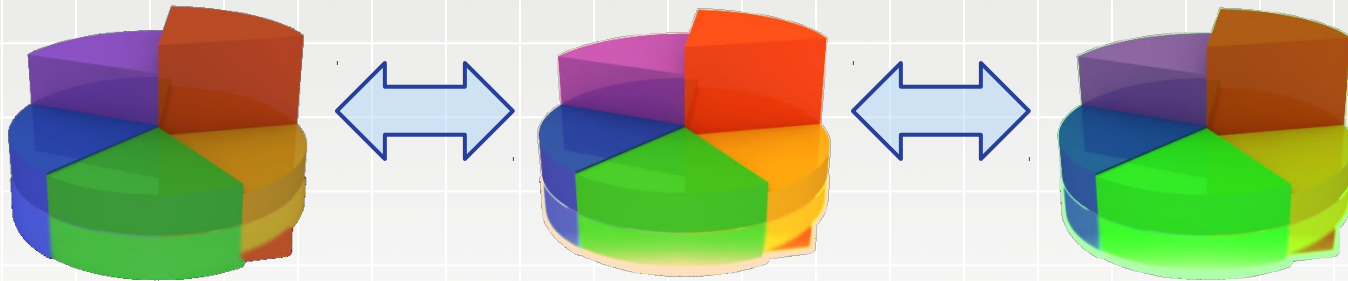
A placeholder for the second picture. More information can be added here by changing this text.





## Three Picture Page Layout

A second line of text may go here.



A description of the first picture. You may change this text.

A second place holder is available here. Add as much text as you would like.

A description of the second picture. You may change this text.

A second place holder is available here. Add as much text as you would like.

A description of the third picture. You may change this text.

A second place holder is available here. Add as much text as you would like.

## Bar Graph Page Layout

A second line of text can go here.

Here is the description of the table. You may change or delete this text as you wish.

This chart is compatible with PowerPoint 97 to 2010.

Here is a placeholder for more text and description of the chart. Changing this text will not interfere with the formatting of this template.

Geographic Region	Q1	Q2	Q3	Q4
United States	1254	1254	1254	1254
Europe and Asia	324	324	324	324
Australia	32	32	32	32
South America	2	2	2	2
Canada	1	1	1	1
Mexico	1	1	1	1
TOTALS	1614	1614	1614	1614

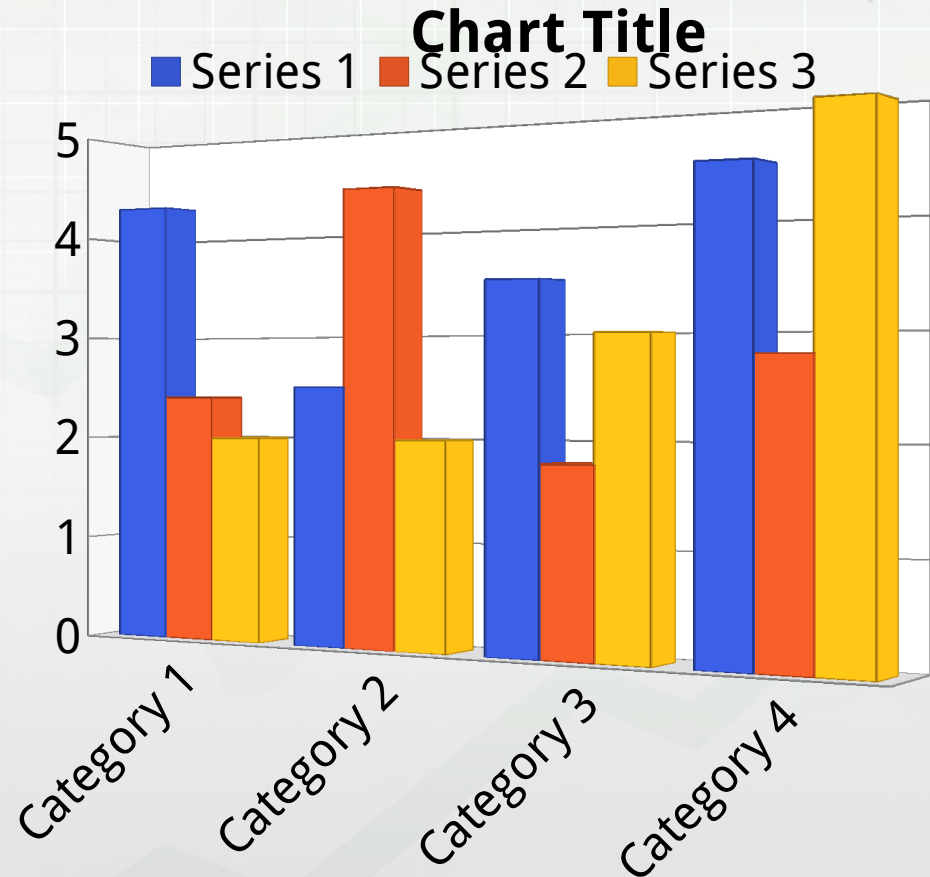
## Bar Graph Page Layout

A callout,  
this can be  
edited or  
deleted

Here is the description of the chart. You may change or delete this text as you wish.

This chart utilizes features only available with 2007 to 2010.

Here is a placeholder for more text and description of the chart. Changing this text will not interfere with the formatting of this template.

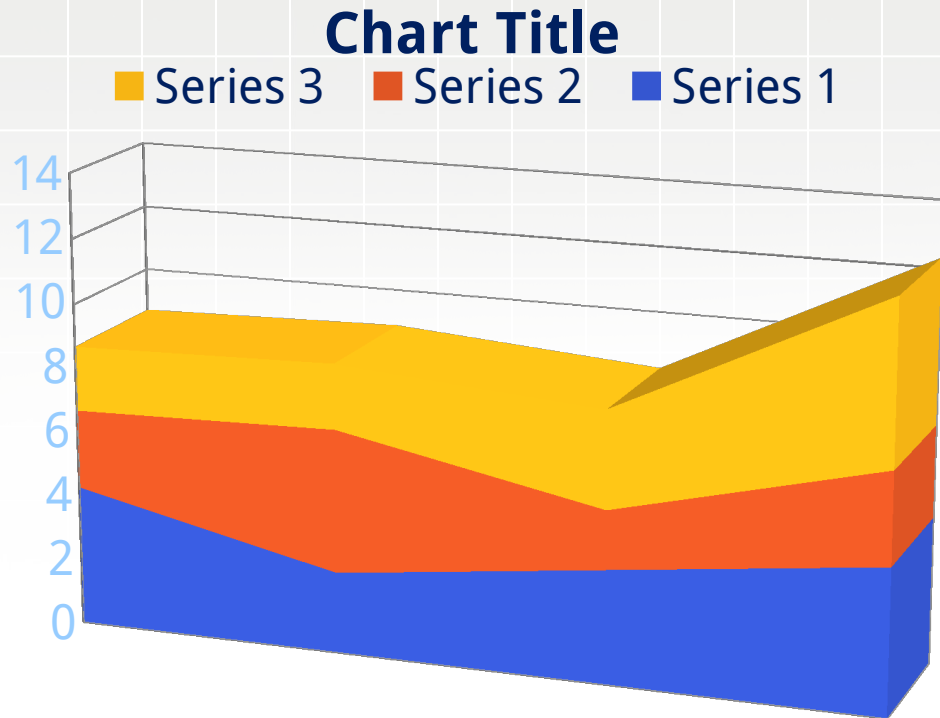


## Line Graph Page Layout

Here is the description of the chart. You may change or delete this text as you wish.

This chart is compatible with PowerPoint 97 to 2007.

Here is a placeholder for more text and description of the chart. Changing this text will not interfere with the formatting of this template.

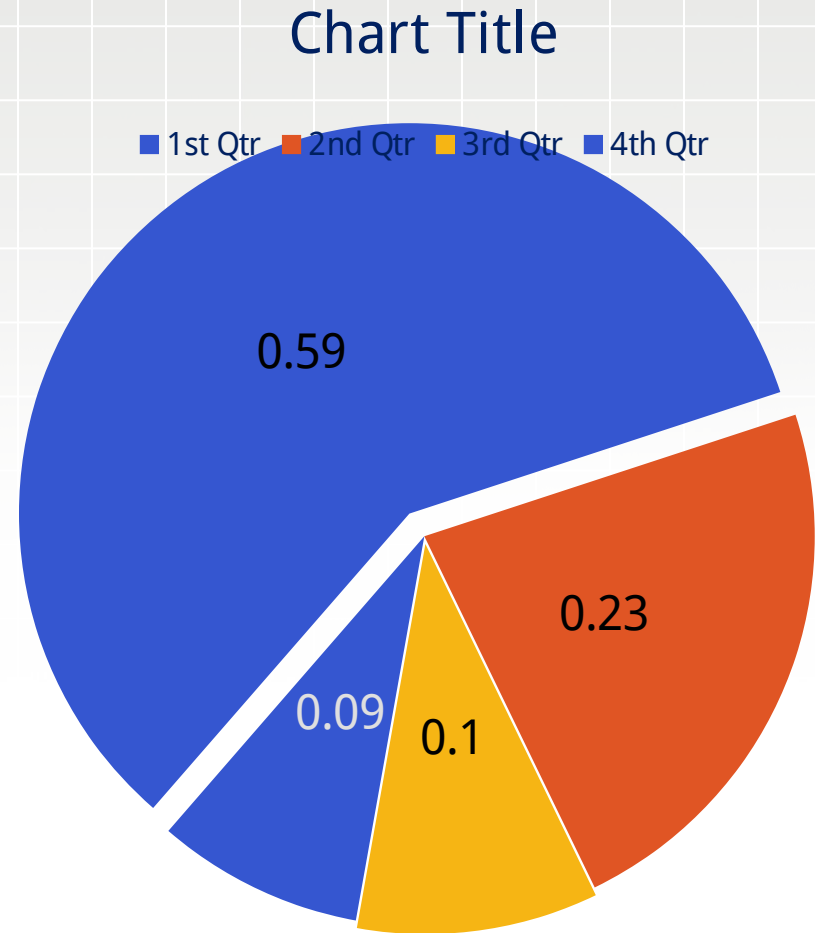


# Pie Graph Page Layout

Here is the description of the chart. You may change or delete this text as you wish.

This chart utilizes features only available with 2007 to 2010.

Here is a placeholder for more text and description of the chart. Changing this text will not interfere with the formatting of this template.



# Smart Art Page Layout

This chart utilizes Smart Art which is feature in PowerPoint 2007 to 2010.

Here is a placeholder for more text and description of the chart. Changing this text will not interfere with the formatting of this template.



### Picture Page Layout

You can add a description of the picture here. In PPT 2007 or newer, this is a custom layout and can be modified under the slide master view.