

Mitochondria=P.E. field

The P.E. Field is the place where we exercise, play, and release the energy we get from the food and nutrients. This is similar because the mitochondria release energy from the nutrients.



Vacuole=Lockers

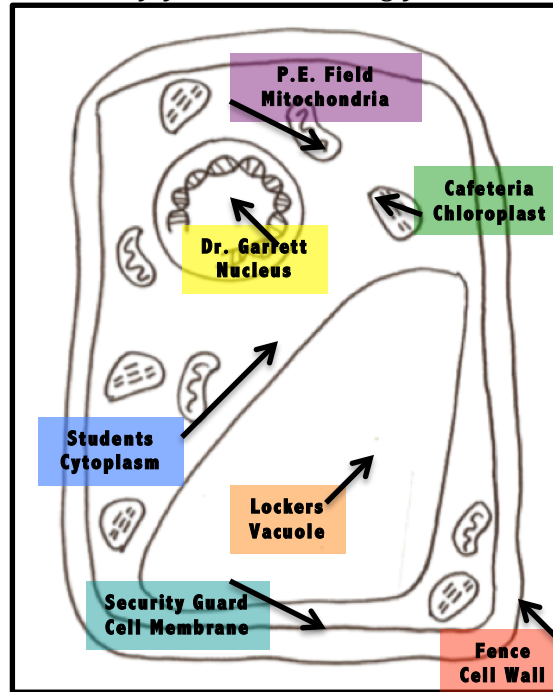
The lockers are great storage for our backpacks and other school supplies while we are releasing energy at P.E.

This is similar because the vacuole stores food and water for the cell until it needs it.



Map of Peary Cell

"Here is the Peary Cell. You can freely visit each of our wonderful attractions. Please enjoy and learn along your visit."



"We hope to see you again soon!"

Contact Information

Mrs. Francis
1-800-PEARYMS
Ms. Ogden
1-800-HUSKIES
555 Husky Way, Schoolville, CA

Come Visit Peary MS



"Peary is a school the C.A.R.E.S!"

by: Mrs. Francis & Ms. Ogden
7th Grade Science/Health

Welcome to the Peary Cell

You should visit the Peary Middle School Cell because it is a place of knowledge. Peary is a place where people grow as individuals and have fun learning. We are safe, respectful, and responsible. Peary has many parts that work together just like the cell has different organelles.



Nucleus=Dr. Garrett

Dr. Garrett is the nucleus because she controls the school as the principal. She helps the teachers to do their job and informs them of important information. She is similar because the nucleus controls the cell and holds its DNA, which is all the information of the organism.



Cell Membrane=Security Guard

Mike, the security guard, is at the gate in the morning making sure only students are coming onto the campus. He ensures that "bad people" don't get in and students don't get out. He is similar to the cell membrane, which decides what goes in and out of the cell.



Cell Wall=The Fence

The fence also protects us "Peary Huskies" from any people who want to cause us harm by keeping them off the campus. This is similar because the cell wall keeps the plant cell from getting squished.



Cytoplasm=The Students

The students are constantly surrounding and moving around the school. They are similar because the cytoplasm is a liquid that surrounds the cells organelles and helps them move around the cell.



Chloroplast=The Cafeteria

The cafeteria is where the food is produced so that each and every person can get energy. This is similar because the chloroplast produces food from energy captured from the sun to perform photosynthesis for the plant cell.

