

HVAC



“redefining mechanical service”

Nasseff Mechanical’s approach to HVAC can be summarized in two words ~ **CUSTOMIZATION and EFFICIENCY**. Today’s facility managers face a constant challenge to reduce operational costs. Nasseff Mechanical provides each customer with customized solutions to maintain, repair, replace, or retrofit systems with the goal of operational efficiency.

Our craftsmen are experienced, certified, and trained, equipping them with leading-edge technology. The certifications held by our craftsmen are Minneapolis and St. Paul Master and/or Journeyman License (includes gas, refrigeration, and, warm air), State of Minnesota High Pressure

Steam Fitter License, Minnesota Chief Boiler Operators License, Minneapolis and St. Paul Fuel Oil License, State Low Voltage License, Power Limited Technicians License, CFC Certification, and a variety of equipment manufacturer certifications. Also, we have craftsmen that are instructors in local trade school apprenticeship programs.

At Nasseff, we work hard to earn the confidence of our customers in healthcare, corporate, education, hospitality/retail, industrial/manufacturing, churches, data centers, and residential estates.

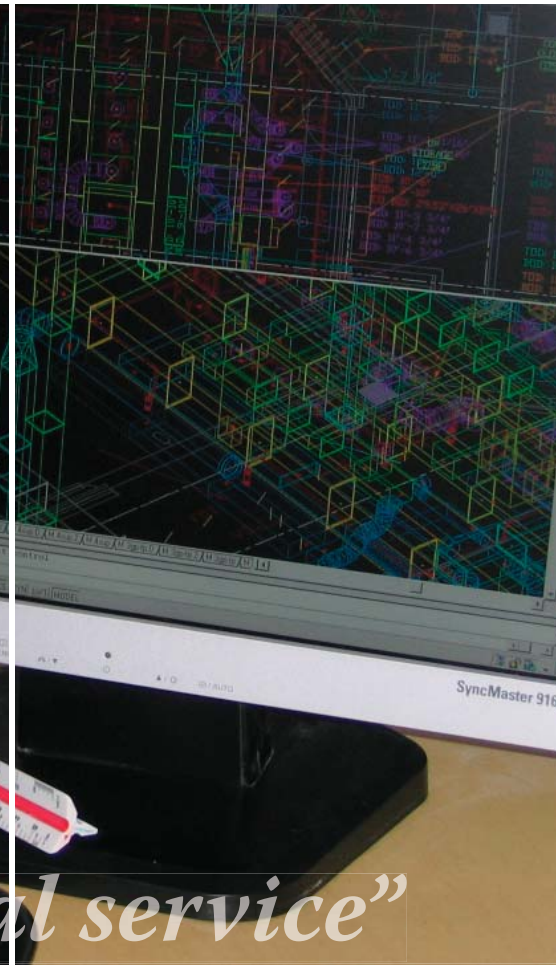
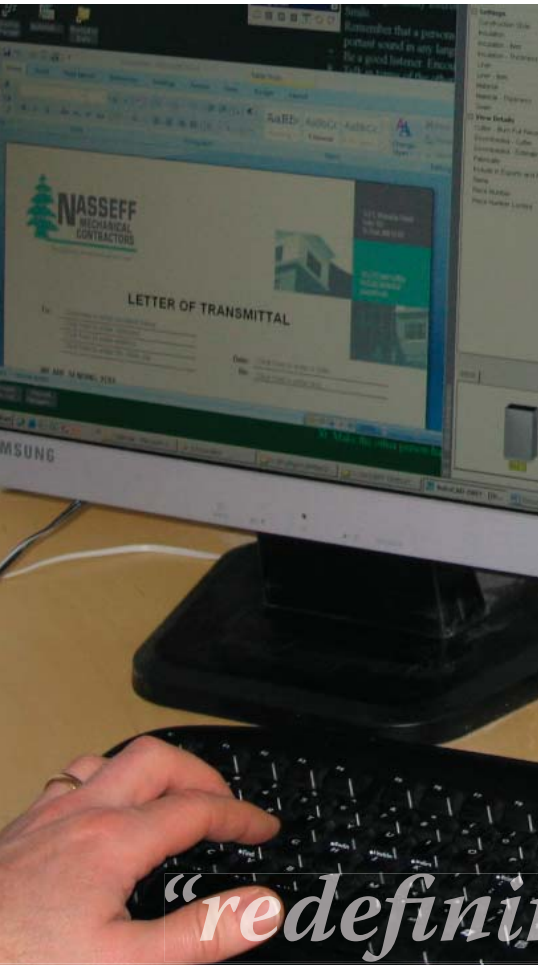
To learn more about Nasseff’s HVAC capabilities, please contact us at 651.777.0001 for details.

HVAC Capabilities

- Heating Systems
- Air Conditioning Systems
- Ventilation Systems
- Computer Room Cooling
- Boiler/Burner Service
- Heat Pumps
- Cleanroom Systems
- Steam Systems
- Humidification Systems
- De-Humidification Systems
- Energy Recovery
- Medical Lab Applications
- Radiant Heating
- Ground Source Heating and Cooling
- Swimming Pool Ventilation
- Emergency Service 24/7



Design Build



“redefining mechanical service”

At Nasseff Mechanical, our approach to design-build is to customize systems that fit an owner's requirements and budget. The owner realizes maximum value for the project investment because we take an active role in the pre-construction activities.

Nasseff is dedicated to incorporating into our designs the latest, most efficient equipment and systems. Another key element to our design-build methodology is value engineering. Through the input of on-site and off-site personnel, we work to identify design alternatives which may favorably impact cost and schedule.

In the end, only NASSEFF Mechanical is accountable for system performance. We have successfully completed many design-build projects and believe our team approach improves communication and forces all involved to work for the same common goals.

An added value to customers is our ability to service and maintain systems after the dust has settled.

Visit [Services/Service and Preventive Maintenance](#) at [Nasseff.com](#) for more details.



Design Assist



“redefining mechanical service”

Nasseff Mechanical's proactive approach to the system design and selection of critical equipment will mean an operational efficient building for the owner. Our pre-construction and design staff have years of combined experience.

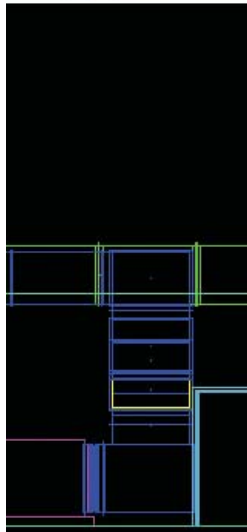
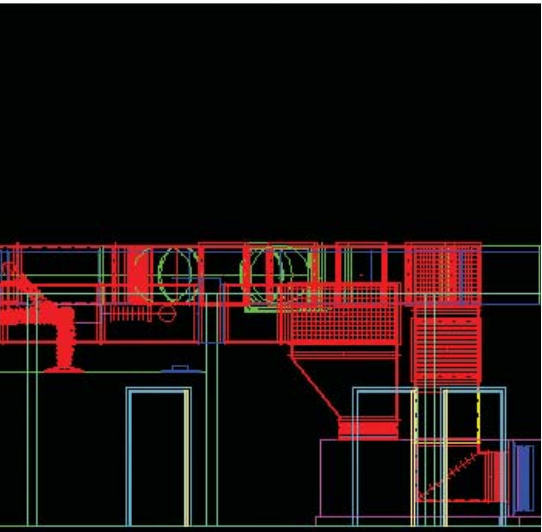
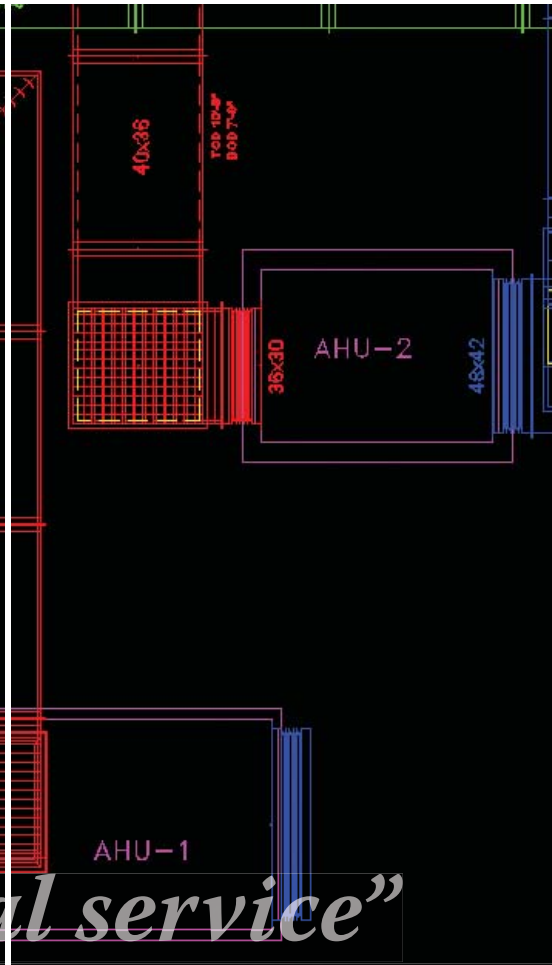
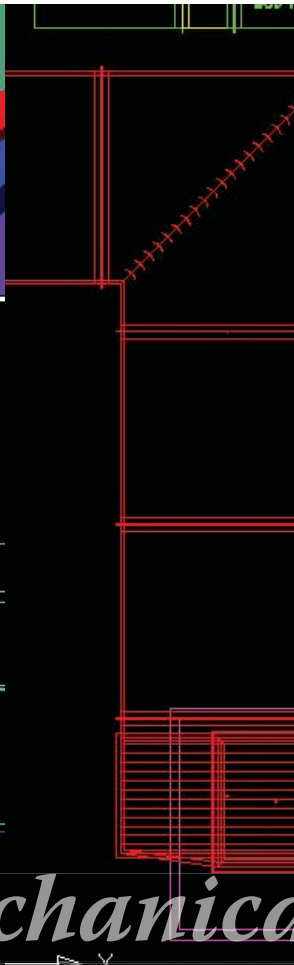
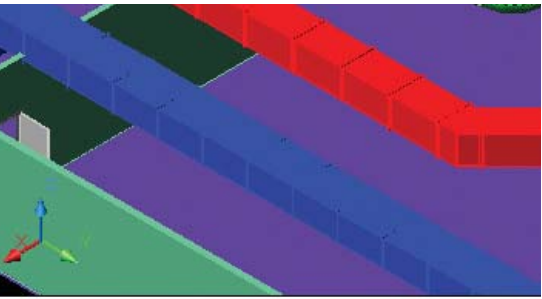
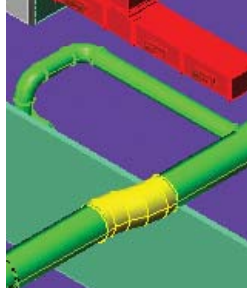
Nasseff will bring value to the team by assisting in the design, quality, constructability, maintenance, and cost issues of the design.

Nasseff will maintain close contact with the architects and engineers to identify any material, design or method of installation that may afford additional savings.

An added value to customers is our ability to service and maintain systems after the dust has settled. Visit [Services/Service and Preventive Maintenance](#) at Nasseff.com for more details.



AutoCAD



“redefining mechanical service”

Nasseff Mechanical maintains the most recent versions of AutoCAD and DuctDesigner 3D, propelling forward our drafting with increased speed and accuracy.

With this internal capability, not only do we provide 3D, color drawings to project designers & planners, we are able to provide field craftsmen any printed plan during project construction including magnified versions of specific areas. Just another way to assure every detail is considered so we can deliver the best completed project for our customer.

To learn more about Nasseff's AutoCAD capabilities, please contact us at 651.777.0001 for details.



In-House Engineering



“redefining mechanical service”

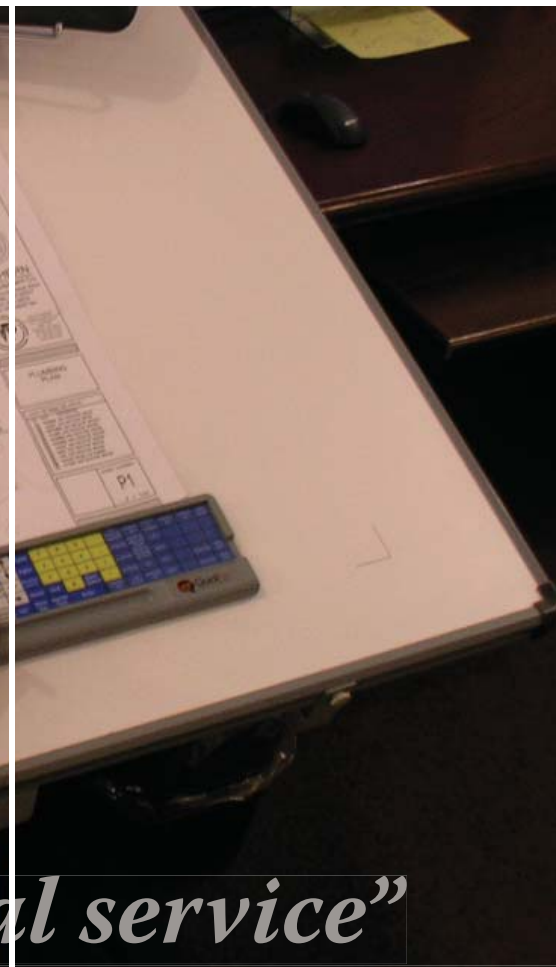
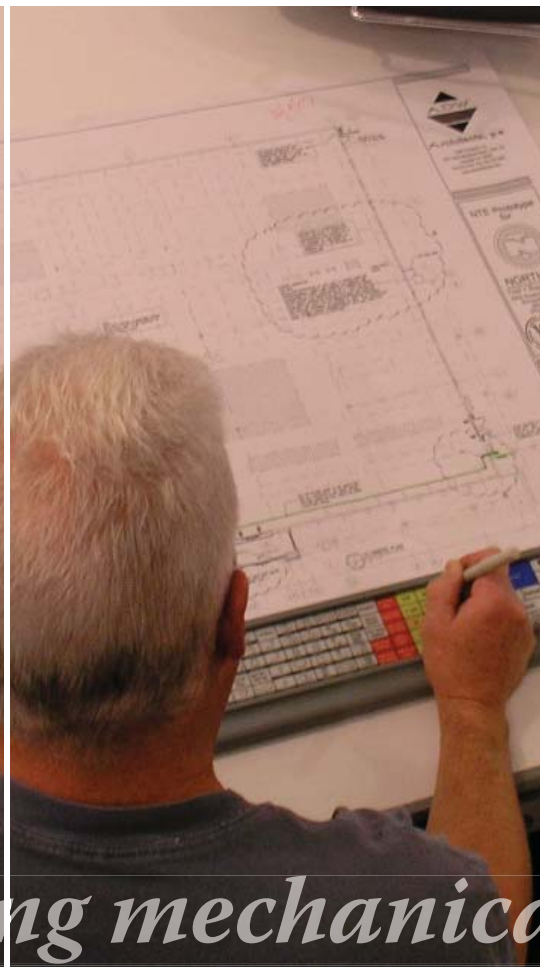
Nasseff Mechanical's in-house resources apply the owner's desire to design mechanical systems enabling a building to operate at peak efficiency, while providing a comfortable environment for occupants. Our drive to offer creative solutions customized to an owner's needs has earned Nasseff the confidence of our customers in healthcare, corporate, education, hospitality/retail, industrial/manufacturing, churches, data centers, and residential estates.

We have strong partnerships with several of the largest mechanical engineering firms in the Upper Midwest.

To learn more about Nasseff's In-House Engineering capabilities, please contact us at 651.777.0001 for details.



Estimating Plan Room



“redefining mechanical service”

Nasseff Mechanical provides customers with the best in estimating technology. Our investment in Quickpen's AutoBID Mechanical and AutoBID Sheetmetal Graphical TakeOff software allows us to get job data in quickly and accurately, extracting bid data precisely the way the information is requested.

Nasseff can effortlessly generate project estimates. Planning and accuracy makes a huge difference with a project. We continually make the investment in this technology so our customers can count on Nasseff to be a strong, reliable partner.

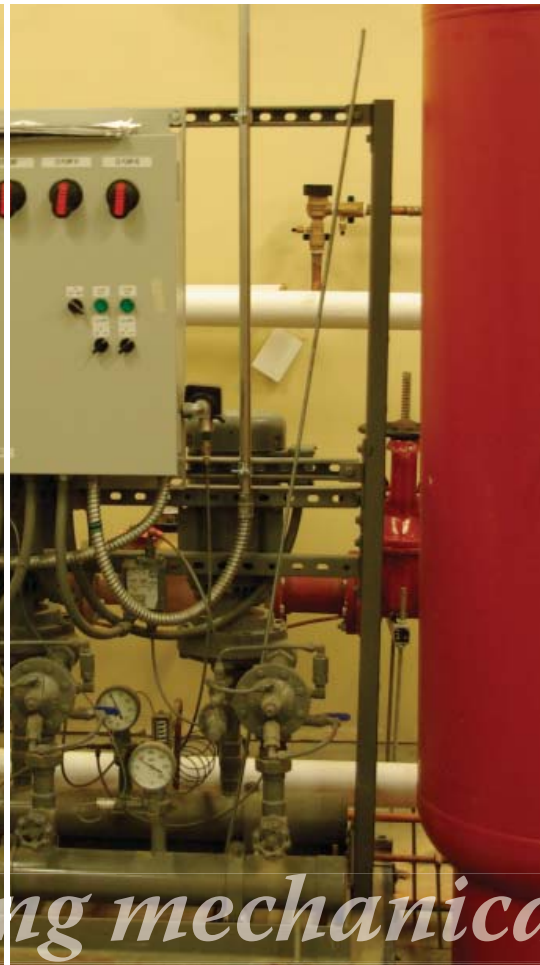
In addition to this technology, our estimators have years of relevant, field experience bringing hands on knowledge to the estimate.

Despite this hi-tech capability, we can still deliver estimates on the small jobs. Our pencils, graph paper, and Excel spreadsheets are still regularly in use.

To learn more about Nasseff's Estimating capabilities, please contact us at 651.777.0001 for details.



Plumbing



“redefining mechanical service”

Nasseff Mechanical provides each customer with customized and professionally designed solutions for all types of plumbing system installations and repairs.

Our plumbing specialists are experienced, certified, and trained, equipping them with leading-edge skills. The certifications held by our plumbers are Master Plumber's License, Competency Cards for Minneapolis and St. Paul, Minnesota Journeyman License, Wisconsin Journeyman License, Medical Gas Certification, and RPZ License. Also, we have plumbers that are instructors in local trade school apprenticeship programs.

At Nasseff, we work hard to earn the confidence of our customers in healthcare, corporate, education, hospitality/retail, industrial / manufacturing, churches, data centers, and residential estates.

To learn more about Nasseff's Plumbing capabilities, please contact us at 651.777.0001 for details.



- Drain, Waste, and Vent Systems
- Domestic Water Piping
- Medical Gas Piping
- RPZ Valve Installation, Annual Testing, and Re-Building
- Sanitary and Storm Separations
- Code Correction and Compliance
- Sewer Augering Water Jetting
- Video Inspection of Sewer Systems
- Water Meters and Backflow Preventers
- Sewage Ejectors
- Water Heater Installation
- Water Pump Replacement and Installation
- Sewers and Water Mains
- Air Piping
- Industrial Piping
- Emergency Service 24/7

Process Piping



“redefining mechanical service”

Nasseff Mechanical is a multi-discipline, process piping contractor meeting the challenges of frequently changing industries. We have extensive experience in diverse methods of complex piping and piping modifications for various industrial applications like food processing, pharmaceuticals, medical, printing, and plastics to name a few.

Nasseff's experienced pipefitters, fabricators, and certified welders regularly perform all facets of piping design, replacement, and installation. Services include threaded, soldered, victaulic, or welded installations of plastic, steel, copper, carbon, and more. Our technicians are experienced

with chemical conveying and food processing systems as well as water, wastewater, steam and condensate, and other process-intensive applications.

At Nasseff, we work hard to earn the confidence of our customers by working to minimize plant shutdowns, presenting alternate solutions for the method of distribution, and system efficiencies to reduce operational challenges.

To learn more about Nasseff's Piping capabilities, please contact us at 651.777.0001 for details.

- High and Low Pressure Steam Systems
- High and Low Pressure Hot Water Systems
- Industrial Piping Systems
- Specialty Gas Systems
- Snow Melting Systems
- Heating, Gas, and Oil Piping
- Air Piping
- Pneumatic Electronic Controls
- Emergency Service 24/7



Fire Protection



“redefining mechanical service”

Count on Nasseff Mechanical to provide all your fire protection needs. We are a full service provider of fire and safety systems which include design, installation, retrofit, rebuilding, inspections, service, and annual testing for commercial and industrial facilities. We follow and adhere to the National Fire Protection Association (NFPA) codes so owners can feel secure in the services we deliver.

Nasseff's investment in the most state-of-the-art equipment like The Hose Monster Fire Pump Test System, The Drop Master, and The Nomad testing equipment sets us apart from other service providers. One example of our efficient and thorough results ~ we are able to efficiently conduct fire pump testing of high-rise buildings, with detailed diagnostic reporting.

Our fire protection specialist are experienced, certified, and trained, equipping them with leading-edge skills and current regulations. The certifications held by our sprinkler fitters are Minnesota Fire Marshal Managing Employee Certification and Minnesota Fire Marshal Journeyman Sprinkler Fitter Certification. Also, we have sprinkler fitters that are instructors in local trade school apprenticeship programs and members of the Apprenticeship Committee.

To learn more about Nasseff's Fire Protection capabilities, please contact us at 651.777.0001 for details.

- Wet and Dry Spray Fire Sprinkler
- Fire Pump Maintenance and Repairs
- Pre-Action Systems
- In-Rack Fire Sprinklers
- Fire Pumps, Tanks, and Underground Loops
- Low Expansion Foams
- Foam Testing and Maintenance
- Systems Modification for Code Compliance
- Back Flow Preventer Testing
- Inspection, Testing, and Maintenance
- Emergency Service 24/7



Specialty Metal Fabrication



“redefining mechanical service”

Nasseff Mechanical specializes in crafting products from concept through installation utilizing the talent and creativity of our skilled craftsmen. We have experience working with hospitals, laboratories, food processing, industrial, manufacturers, offices, etc. producing high-quality fabricated components from steel, stainless steel, aluminum, brass, zinc, and exotic materials.

Specialized Industrial Fabrication

- Production Lines
- Equipment Modification
- Assembly Surfaces and Storage
- Exhausting
- Safety Guards

Medical and Laboratory Applications

- Stainless Steel Tables and Counters
- Custom Shelving and Cabinets
- Specialized Accessory Pieces
- Exhaust Hoods

Food Processing, Bakeries, Food Service, and Kitchen Applications

- Stainless Steel Countertops, Shelving, & Cabinets
- Specialized Assembly Line Modifications
- Stainless Steel Exhaust Hoods
- Fabricate Floor Drains

Architectural Metal Fabrication & Installation Ducting

- Metal Reconditioning
- Decorative Metals and Sculptures
- Displays and Exhibits
- Stairs and Railings

Elevator/Escalator Skinning and Reconditioning

Miscellaneous

- Roof Curbs
- Drip Pans
- Trap Guards
- Floor Grates



To learn more about Nasseff's Specialty Metal Fabrication capabilities, please contact us at 651.777.0001 for details.

Service and Preventive Maintenance



“redefining mechanical service”

Nasseff Mechanical takes a proactive approach to assuring the efficient operation of a building's systems and protecting the initial equipment investment.

A critical function of extending the life of a building's systems is by conducting scheduled preventive maintenance (PM). During routine PM visits, our technicians inspect the system performance, diagnosing potential problems before they become an expensive emergency. This methodology provides an opportunity to plan the repair in a proactive manner.

Also, as systems reach the end of their functional life, Nasseff will budget replacement costs so management can plan it into the expense or capital budget.

Nasseff built a solid reputation for 24-hour accessibility, skills, and knowledge of customers and their systems. Our high standard of customer service will save you time and money.

All after hours emergency calls are answered by Senior Management personnel. You are not going to reach an administrative call center. Your emergency is monitored through completion by Senior Management.

Service & Preventive Maintenance Offerings

Plumbing & Piping

HVAC

Fire Protection

See page two for details



Service and Preventive Maintenance



“redefining mechanical service”

Plumbing and Piping

Service, Repair, and Inspecting

- Piping
- Rain Water Systems
- Natural and Medical Gas
- Industrial Piping
- Water Mains • Water Meters
- Water Pumps • Water Filters
- Water Heaters
- Back Flow Devices
- Gas Leaks
- Sewer
- Toilets, Faucets
- Sinks, Tubs, Toilets Unclogged and Repaired
- Grease Traps Cleaned
- Boilers
- Leaks Fixed
- Thaw Water Pipes

Preventive Maintenance Programs

- Scheduled Maintenance
- Drainage Systems Cleaning with Cameras & High-Pressure Water Jets
- Annual RPZ Valve Testing
- Winterizing
- Custom Programs
- Discounted Labor Rates
- Priority Emergency Service

HVAC

Services

- Heating Systems
- Air Conditioning Systems
- Ventilation Systems
- Computer Room Cooling
- Industrial Process Equipment
- Boiler/Burner
- Clean Room
- Heat Pumps
- Certified Service Technicians
- All Equipment Types and Brands
- Emergency Service 24/7

Preventive Maintenance Programs

- Scheduled Maintenance
- Cooling and Heating Startups
- Equipment Performance Checks
- Extended Equipment Life
- Custom Programs
- Discounted Labor Rates
- Priority Emergency Service

Special Projects

- Replacements
- Retrofits
- Correcting Comfort Issues
- Equipment Evaluation

Fire Protection

Services

- Fire Pump Maintenance and Repair
- Foam Testing and Maintenance
- System Modification for Code Compliance
- Back Flow Preventer Testing
- Inspect, Test, and Maintain
- High-Rise Pressure Reducing Valve Testing
- Emergency Service 24/7



Energy Audit



“redefining mechanical service”

Nasseff Mechanical is committed to making commercial buildings a part of the energy conservation solution. By working with building management, our energy audits have proven to identify building inefficiencies and energy reduction opportunities.

Commercial buildings are the biggest offender of our environment from an energy efficiency standpoint. Buildings generate 48% of the U.S. greenhouse gas emissions which is much higher than the 27% produced by the transportation industry. Also, buildings use 75% of the nation's electricity. Nasseff takes pride in leading building/facility management to responsibly reduce these percentages, while improving building operational conditions.

To learn more about Nasseff's Energy Audit capabilities, please contact us at 651.777.0001 for details.

- Equipment Analysis
- Billing History Analysis
- Analysis of Energy Consumption Patterns
- Life Cycle Costing
- Information on Qualifying Equipment Rebates and Incentive Programs
- Recommendations for Off-Peak Strategies and Systems
- Written Cost-Savings Recommendations
- Stipulated Cost Savings for Installing New, High-Efficiency Equipment
- Partner with Building Engineers to Obtain Their Environmental and Operational Excellence Goals
- Emergency Service 24/7

