

onetouch*Pixi*

4007X
4007D

www.alcatelonetouch.com



For more information on how to use the phone, please go to www.alcatelonetouch.com and download the complete user manual. Moreover, on the website, you can also find answers to frequently asked questions, upgrade the software via PC suite, and so much more.

ALCATEL onetouch.

ALCATEL onetouch.

Note:

This is a shared user manual for ONE TOUCH 4007X/ONE TOUCH 4007D.

Table of Contents

Safety and use.....	4
----------------------------	----------

General information	11
----------------------------------	-----------

1 Your mobile	14
----------------------------	-----------

1.1 Keys and connectors	14
1.2 Getting started	16
1.3 Home screen.....	20

2 Text input.....	29
--------------------------	-----------

2.1 Using Onscreen Keyboard.....	29
2.2 Text editing.....	30

3 Phone call, Call log and Contacts.....	31
---	-----------

3.1 Phone.....	31
3.2 Call log.....	36
3.3 Contacts.....	37

4 Google Messaging, Gmail/Email, Google Talk	45
---	-----------

4.1 Google Messaging	45
4.2 Gmail/Email.....	51
4.3 Google Talk.....	56

5 Google Calendar & Clock & Calculator & News & Weather	60
--	-----------

5.1 Google Calendar	60
5.2 Clock.....	62
5.3 Calculator.....	63
5.4 News & Weather.....	65

6 Getting connected	67
----------------------------------	-----------

6.1 Connecting to the Internet	67
6.2 Browser.....	71
6.3 Connecting to Bluetooth devices	80

6.4 Connecting to a computer via USB.....	82
6.5 Sharing your phone's mobile data connection.....	84
6.6 Connecting to virtual private networks.....	85

7 Multimedia applications	87
--	-----------

7.1 Camera	87
7.2 Gallery	90
7.3 YouTube.....	93
7.4 Music	94

8 Google Maps.....	97
---------------------------	-----------

8.1 Get My Location	97
8.2 Search for a location	98
8.3 Star a location.....	99
8.4 Get driving, public transport or walking directions.....	100
8.5 Arrangement of Layers	101

9 Others	103
-----------------------	------------

9.1 File Manager	103
9.2 Notes	103
9.3 Sound Recorder	104
9.4 FM Radio	104
9.5 Battery Saver.....	105
9.6 Setup Wizard	105
9.7 Office suite	106
9.8 Traffic Manager.....	106
9.9 Alcatel Help.....	106
9.10 Voice Dailer.....	106
9.11 Voice Search.....	107
9.12 Other applications	107

10 Settings	108
--------------------------	------------

10.1 SIM management	108
10.2 Wireless & networks	109
10.3 Call settings	112
10.4 Audio profiles.....	114

10.5	Display.....	115
10.6	Location.....	115
10.7	Security.....	116
10.8	Applications.....	118
10.9	Accounts & sync.....	120
10.10	Privacy.....	121
10.11	SD card & phone storage.....	122
10.12	Language & keyboard.....	123
10.13	Voice input & output.....	125
10.14	Accessibility.....	127
10.15	Date & time.....	127
10.16	Schedule power on/off.....	128
10.17	About phone.....	129
11	Making the most of your phone.....	131
11.1	Upgrade.....	131
12	Telephone warranty.....	133
13	Accessories.....	135
14	Troubleshooting.....	136
15	Specifications.....	141



www.sar-tick.com

This product meets applicable national SAR limits of 2.0 W/kg. The specific maximum SAR values can be found on page 7 of this user guide.

When carrying the product or using it while worn on your body, either use an approved accessory such as a holster or otherwise maintain a distance of 10 mm from the body to ensure compliance with RF exposure requirements. Note that the product may be transmitting even if you are not making a phone call.

Safety and use.....

We recommend that you read this chapter carefully before using your phone. The manufacturer disclaims any liability for damage, which may result as a consequence of improper use or use contrary to the instructions contained herein.

• TRAFFIC SAFETY:

Given that studies show that using a mobile phone while driving a vehicle constitutes a real risk, even when the hands-free kit is used (car kit, headset...), drivers are requested to refrain from using their mobile when the vehicle is not parked.

When driving, do not use your phone and headphone to listen to music or to the radio. Using a headphone can be dangerous and forbidden in some areas.

When switched on, your phone emits electromagnetic waves that can interfere with the vehicle's electronic systems such as ABS anti-lock brakes or airbags. To ensure that there is no problem:

- do not place your phone on top of the dashboard or within an airbag deployment area,
- check with your car dealer or the car manufacturer to make sure that the dashboard is adequately shielded from mobile phone RF energy.

• CONDITIONS OF USE:

You are advised to switch off the telephone from time to time to optimise its performance.

Switch the phone off before boarding an aircraft.

Switch the phone off when you are in health care facilities, except in designated areas. As with many other types of equipment now in regular use, mobile telephones can interfere with other electrical or electronic devices, or equipment using radio frequency.

Switch the phone off when you are near gas or flammable liquids. Strictly obey all signs and instructions posted in a fuel depot, petrol station, or chemical plant, or in any potentially explosive atmosphere.

When the phone is switched on, it should be kept at least 15 cm from any medical device such as a pacemaker, a hearing aid or insulin pump, etc. In particular when using the phone, you should hold it against the ear on the opposite side to the device, if any.

To avoid hearing impairment, pick up the call before holding your phone to your ear. Also move the handset away from your ear while using the "hands-free" mode because the amplified volume might cause hearing damage.

Do not let children use the phone and/or play with the telephone and accessories without supervision.

When replacing the cover please note that your phone may contain substances that could create an allergic reaction.

Always handle your phone with care and keep it in a clean and dust-free place.

Do not allow your phone to be exposed to adverse weather or environmental conditions (moisture, humidity, rain, infiltration of liquids, dust, sea air, etc). The manufacturer's recommended operating temperature range is -10°C to +55°C.

At over 55°C the legibility of the phone's display may be impaired, though this is temporary and not serious.

Emergency call numbers may not be reachable on all cellular networks. You should never rely only on your phone for emergency calls.

Do not open, dismantle or attempt to repair your mobile phone yourself.

Do not drop, throw or bend your mobile phone.

Do not use the phone if the glass made screen, is damaged, cracked or broken to avoid any injury.

Do not paint it.

Use only batteries, battery chargers, and accessories which are recommended by TCT Mobile Limited and its affiliates or are compatible with your phone model. TCT Mobile Limited and its affiliates disclaim any liability for damage caused by the use of other chargers or batteries.

Remember to make back-up copies or keep a written record of all important information stored in your phone.

Some people may suffer epileptic seizures or blackouts when exposed to flashing lights, or when playing video games. These seizures or blackouts may occur even if a person never had a previous seizure or blackout. If you have experienced seizures or blackouts, or if you have a family history of such occurrences, please consult your doctor before playing video games on your phone or enabling a flashing-lights feature on your phone.

Parents should monitor their children's use of video games or other features that incorporate flashing lights on the phones. All persons should discontinue use and consult a doctor if any of the following symptoms occur: convulsion, eye or muscle twitching, loss of awareness, involuntary movements, or disorientation. To limit the likelihood of such symptoms, please take the following safety precautions:

- Do not play or use a flashing-lights feature if you are tired or need sleep.
- Take a minimum of a 15-minute break hourly.
- Play in a room in which all lights are on.
- Play at the farthest distance possible from the screen.
- If your hands, wrists, or arms become tired or sore while playing, stop and rest for several hours before playing again.
- If you continue to have sore hands, wrists, or arms during or after playing, stop the game and see a doctor.

When you play games on your phone, you may experience occasional discomfort in your hands, arms, shoulders, neck, or other parts of your body. Follow the instructions to avoid problems such as tendinitis, carpal tunnel syndrome, or other musculoskeletal disorders.



PROTECT YOUR HEARING

To prevent possible hearing damage, do not listen at high volume levels for long periods. Exercise caution when holding your device near your ear while the loudspeaker is in use.

• PRIVACY:

Please note that you must respect the laws and regulations in force in your jurisdiction or other jurisdiction(s) where you will use your mobile phone regarding taking photographs and recording sounds with your mobile telephone. Pursuant to such laws and regulations, it may be strictly forbidden to take photographs and/or to record the voices of other people or any of their personal attributes, and duplicate or distribute them, as this may be considered to be an invasion of privacy. It is the user's sole responsibility to ensure that prior authorisation be obtained, if necessary, in order to record private or confidential conversations or take a photograph of another person; the manufacturer, the seller or vendor of your mobile phone (including the operator) disclaim any liability which may result from the improper use of the mobile phone.

• BATTERY:

Before removing the battery from your phone, please make sure that the phone is switched off.

Observe the following precautions for battery use:

- Do not attempt to open the battery (due to the risk of toxic fumes and burns).
- Do not puncture, disassemble or cause a short-circuit in a battery,
- Do not burn or dispose of a used battery in household rubbish or store it at temperatures above 60°C.

Batteries must be disposed of in accordance with locally applicable environmental regulations. Only use the battery for the purpose for which it was designed. Never use damaged batteries or those not recommended by TCT Mobile Limited and/or its affiliates.



This symbol on your telephone, the battery and the accessories means that these products must be taken to collection points at the end of their life:

- Municipal waste disposal centres with specific bins for these items of equipment
- Collection bins at points of sale.

They will then be recycled, preventing substances being disposed of in the environment, so that their components can be reused.

In European Union countries:

These collection points are accessible free of charge.

All products with this sign must be brought to these collection points.

In non European Union jurisdictions:

Items of equipment with this symbol are not to be thrown into ordinary bins if your jurisdiction or your region has suitable recycling and collection facilities; instead they are to be taken to collection points for them to be recycled.

CAUTION: RISK OF EXPLOSION IF BATTERY IS REPLACED BY AN INCORRECT TYPE. DISPOSE OF USED BATTERIES ACCORDING TO THE INSTRUCTIONS.

• CHARGERS

Mains powered chargers will operate within the temperature range of: 0°C to 40°C.

The chargers designed for your mobile phone meet with the standard for safety of information technology equipment and office equipment use. They are also compliant to the ecodesign directive 2009/125/EC. Due to different applicable electrical specifications, a charger you purchased in one jurisdiction may not work in another jurisdiction. They should be used for this purpose only.

• RADIO WAVES:

Proof of compliance with international standards (ICNIRP) or with European Directive 1999/5/EC (R&TTE) is required of all mobile phone models before they can be put on the market. The protection of the health and safety for the user and any other person is an essential requirement of these standards or this directive.

THIS DEVICE MEETS INTERNATIONAL GUIDELINES FOR EXPOSURE TO RADIO WAVES.

Your mobile device is a radio transmitter and receiver. It is designed not to exceed the limits for exposure to radio waves (radio frequency electromagnetic fields) recommended by international guidelines. The guidelines were developed by an independent scientific organization (ICNIRP) and include a substantial safety margin designed to assure the safety of all persons, regardless of age and health.

The radio wave exposure guidelines use a unit of measurement known as the Specific Absorption Rate, or SAR. The SAR limit for mobile devices is 2 W/kg.

Tests for SAR are conducted using standard operating positions with the device transmitting at its highest certified power level in all tested frequency bands. The highest SAR values under the ICNIRP guidelines for this device model are:

ONETOUCH 4007X:

Maximum SAR for this model and conditions under which it was recorded.		
Head SAR	UMTS 2100 + Bluetooth + Wi-Fi	0.858 W/kg
Body-worn SAR	UMTS 2100 + Bluetooth + Wi-Fi	0.732 W/kg

ONETOUCH 4007D:

Maximum SAR for this model and conditions under which it was recorded.		
Head SAR	UMTS 2100 + Bluetooth + Wi-Fi	0.858 W/kg
Body-worn SAR	UMTS 2100 + Bluetooth + Wi-Fi	0.732 W/kg

During use, the actual SAR values for this device are usually well below the values stated above. This is because, for purposes of system efficiency and to minimize interference on the network, the operating power of your mobile device is automatically decreased when full power is not needed for the call. The lower the power output of the device, the lower its SAR value.

Body-worn SAR testing has been carried out at a separation distance of 10 mm. To meet RF exposure guidelines during body-worn operation, the device should be positioned at least this distance away from the body. If you are not using an approved accessory ensure that whatever product is used is free of any metal and that it positions the phone the indicated distance away from the body.

Organizations such as the World Health Organization and the US Food and Drug Administration have stated that if people are concerned and want to reduce their exposure they could use a hands-free device to keep the phone away from the head and body during phone calls, or reduce the amount of time spent on the phone.

For more information you can go to www.alcatelonetouch.com

Additional information about electromagnetic fields and public health are available on the following site: <http://www.who.int/peh-emf>.

Your telephone is equipped with a built-in antenna. For optimal operation, you should avoid touching it or degrading it.

As mobile devices offer a range of functions, they can be used in positions other than against your ear. In such circumstances the device will be compliant with the guidelines when used with headset or usb data cable. If you are using another accessory ensure that whatever product is used is free of any metal and that it positions the phone at least 10 mm away from the body.

• LICENCES



microSD Logo is a trademark.



The Bluetooth word mark and logos are owned by the Bluetooth SIG, Inc. and any use of such marks by TCT Mobile Limited and its affiliates is under license. Other trademarks and trade names are those of their respective owners.

ONE TOUCH 4007X/4007D Bluetooth QD ID B020261

The Wi-Fi Logo is a certification mark of the Wi-Fi Alliance.



Google, the Google logo, Android, the Android logo, Google Search™, Google Maps™, Gmail™, YouTube, Android Market, Google Latitude™ and Google Talk™ are trademarks of Google Inc.

The Android robot is reproduced or modified from work created and shared by Google and used according to terms described in the Creative Commons 3.0 Attribution License (the text will show when you touch and hold **Google legal in Settings\ About phone\ Legal information**)⁽¹⁾.

You have purchased a product which uses the open source (<http://opensource.org/>) programs mtd, mdsdfs, netfilter/iptables and inlrd in object code and other open source programs licensed under the GNU General Public License and Apache License.

We will provide you with a complete copy of the corresponding source codes upon request within a period of three years from the distribution of the product by TCT.

You may download the source codes from <http://sourceforge.net/projects/alcatel/files/>. The provision of the source code is free of charge from internet.

⁽¹⁾ It may not be available according to the countries.

• Regulatory information

The following approvals and notices apply in specific regions as noted.

4007X:

4007D:

TCT Mobile

TCT Mobile Europe SAS
55 Avenue des Champs Pierreux,
Immeuble Le Capitole 92000 Nanterre, France
+33 1 48 52 61 00

EC declaration of conformity / Déclaration de conformité CE

Product / Produit : HSDPAHSUPAUMTS dual band / GSM quad bands handheld station with bluetooth technology, WiFi and FM radio / Portatif HSDPAHSUPAUMTS bande / GSM quadribandes avec technologie Bluetooth, WiFi et radio FM

Product identification / Identification du produit :
ALCATEL ONE TOUCH 4007X type Ptxo EU

We / Nous : TCT Mobile Europe SAS
55, avenue des Champs Pierreux
92000 Nanterre
France

Declare under our sole responsibility that the product above mentioned is conform to the applicable essential requirements of the directive 1999/5/EC and that all essential radio test suites have been carried out. Conformity assessment procedure : annex IV of the directive. / Déclarons sous notre entière responsabilité que le produit ci-dessus est en conformité avec les exigences essentielles applicables de la directive 1999/5/CE et que toutes les séries d'essais radio essentielles ont été effectuées. Procédure d'évaluation de conformité : annexe IV de la directive.

Applied standards / Normes appliquées :

- Item 3.1.a (protection of the health and of the safety of the user) / Article 3.1.a (protection de la santé et de la sécurité de l'utilisateur)
 - EN 60550-1:2008 + A11:2009+ A12:2011 + A1:2010
 - EN 62209-1 (2006)
 - EN 62209-2 (2010)
 - EN 50 360: 2001/AC:2006, Council recommendation 1999/519/EC (July 99)
- Item 3.1.b (protection requirements with respect to electromagnetic compatibility) / Article 3.1.b (exigences de protection en ce qui concerne la compatibilité électromagnétique)
 - EN 301 489-1 v.1.9.2 (2011-09), EN 301 489-7 v.1.3.1 (2005-11), EN 301 489-17 v.2.1.1 (2009-05), EN 301 489-24 v.1.5.1 (2010-10)
- Item 3.2 (effective use of spectrum so as to avoid harmful interferences) / Article 3.2 (utilisation efficace du spectre radioélectrique de façon à éviter les interférences dommageables)
 - EN 301 511 v.9.0.2 (2003-03), EN 301 908-1 v.5.2.1 (2011-05), EN 301 908-2 v.5.2.1 (2011-07), EN 300 328 v.1.7.1 (2006-10)

This product also conforms to the applicable requirements of following directives,
- directive 2004/108/EC (electromagnetic compatibility). / Ce produit est en conformité avec la directive 2004/108/CE (compatibilité électromagnétique)

- EN 55013:2001 + A1:2003+A2:2006

- EN 55020:2007+A11:2011

- directive 2011/65/EU (RoHS - restriction of the use of certain hazardous substances)

This product can connect with a Common Mobile Phone Charger which complies with below standards:
(Ce produit peut être utilisé avec un chargeur universel pour téléphone portable conforme aux standards suivants)

- EN301 489-34 v1.1.1 (2010-10)

- EN301 489-34 v1.3.1 (2012-05)

- EN 62284:2010

Conformity of this product has been reviewed by the following Notified body of directive 1999/5/EC / La conformité de ce produit a été vérifiée par l'organisme de certification (notifié body) suivant.

American Certification Body, Inc.
Suite C110, Whittier Avenue 6731, 22101 McLean, Virginia, United States
Identification number: 1598

Date :2013-07-01
Signature

TCT Mobile Europe SAS / Deputy General Manager, EMEA, FRANCE
Immeuble Le Capitole
55 Avenue des Champs Pierreux
92000 Nanterre
France
+33 1 48 52 61 00

CE1588

TCT Mobil

TCT Mobile Europe /
55 Avenue des Champs Pierres
Immeuble Le Capitole 92000 Nanterre, Fran
+33 1 48 52 61 00

EC declaration of conformity / Déclaration de conformité CE

Product / Produit : HSDPAHSUPAUMTS dual band / GSM quad bands handheld station with bluetooth technology, WiFi and FM radio / Portatif HSDPAHSUPAUMTS bande / GSM quadribandes avec technologie Bluetooth, WiFi et radio FM

Product identification / Identification du produit :
ALCATEL ONE TOUCH 4007D type Ptxo 291M EU

We / Nous : TCT Mobile Europe SAS
55, avenue des Champs Pierreux
92000 Nanterre
France

Declare under our sole responsibility that the product above mentioned is conform to the applicable essential requirements of the directive 1999/5/EC and that all essential radio test suites have been carried out. Conformity assessment procedure : annex IV of the directive. / Déclarons sous notre entière responsabilité que le produit ci-dessus est en conformité avec les exigences essentielles applicables de la directive 1999/5/CE et que toutes les séries d'essais radio essentielles ont été effectuées. Procédure d'évaluation de conformité : annexe IV de la directive.

Applied standards / Normes appliquées :

- Item 3.1.a (protection of the health and of the safety of the user) / Article 3.1.a (protection de la santé et de la sécurité de l'utilisateur)
 - EN 60550-1:2008 + A11:2009+ A12:2011 + A1:2010
 - EN 62209-1 (2006)
 - EN 62209-2 (2010)
 - EN 50 360: 2001/AC:2006, Council recommendation 1999/519/EC (July 99)
- Item 3.1.b (protection requirements with respect to electromagnetic compatibility) / Article 3.1.b (exigences de protection en ce qui concerne la compatibilité électromagnétique)
 - EN 301 489-1 v.1.9.2 (2011-09), EN 301 489-7 v.1.3.1 (2005-11), EN 301 489-17 v.2.1.1 (2009-05), EN 301 489-24 v.1.5.1 (2010-10)
- Item 3.2 (effective use of spectrum so as to avoid harmful interferences) / Article 3.2 (utilisation efficace du spectre radioélectrique de façon à éviter les interférences dommageables)
 - EN 301 511 v.9.0.2 (2003-03), EN 301 908-1 v.5.2.1 (2011-05), EN 301 908-2 v.5.2.1 (2011-07), EN 300 328 v.1.7.1 (2006-10)

This product also conforms to the applicable requirements of following directives,
- directive 2004/108/EC (electromagnetic compatibility). / Ce produit est en conformité avec la directive 2004/108/CE (compatibilité électromagnétique)

- EN 55013:2001 + A2:2006

- EN 55020:2007

- directive 2011/65/EU (RoHS - restriction of the use of certain hazardous substances)

This product can connect with a Common Mobile Phone Charger which complies with below standards:
(Ce produit peut être utilisé avec un chargeur universel pour téléphone portable conforme aux standards suivants)

- EN301 489-34 v1.1.1 (2010-10)

- EN301 489-34 v1.3.1 (2012-05)

- EN 62284:2010

Conformity of this product has been reviewed by the following Notified body of directive 1999/5/EC / La conformité de ce produit a été vérifiée par l'organisme de certification (notifié body) suivant.

American Certification Body, Inc.
Suite C110, Whittier Avenue 6731, 22101 McLean, Virginia, United States
Identification number: 1598

Date :2013-07-01
Signature

TCT Mobile Europe SAS / Deputy General Manager, EMEA, FRANCE
Immeuble Le Capitole
55 Avenue des Champs Pierreux
92000 Nanterre
France
+33 1 48 52 61 00

CE1588

General information

- **Internet address:** www.alcatelonetouch.com
- **Hot Line Number:** see “TCT Mobile Services” leaflet or go to our website.
- **Address:** Room 1910-12A, Tower 3, China HK City, 33 Canton Road, Tsimshatsui, Kowloon, Hong Kong

On our website, you will find our FAQ (Frequently Asked Questions) section. You can also contact us by email to ask any questions you may have.

An electronic version of this user guide is available in English and other languages according to availability on our server:

www.alcatelonetouch.com

Your telephone is a transceiver that operates on GSM/GPRS/EDGE in quad-band with 850/900/1800/1900 MHz or UMTS in dual-band with 900/2100 MHz.

CE1588

This equipment is in compliance with the essential requirements and other relevant provisions of Directive 1999/5/EC. The entire copy of the Declaration of Conformity for your telephone can be obtained through our website: www.alcatelonetouch.com.

Protection against theft ⁽¹⁾

Your telephone is identified by an IMEI (phone serial number) shown on the packaging label and in the phone's memory. We recommend that you note the number the first time you use your telephone by entering * # 0 6 # and keep it in a safe place. It may be requested by the police or your operator if your telephone is stolen. This number allows your mobile telephone to be blocked preventing a third person from using it, even with a different SIM card.

Disclaimer

There may be certain differences between the user manual description and the phone's operation, depending on the software release of your telephone or specific operator services.

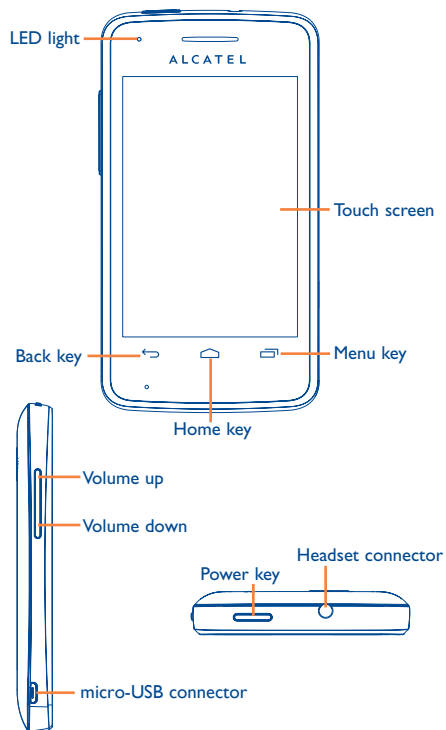
TCT Mobile shall not be held legally responsible for such differences, if any, nor for their potential consequences, which responsibility shall be borne by the operator exclusively.

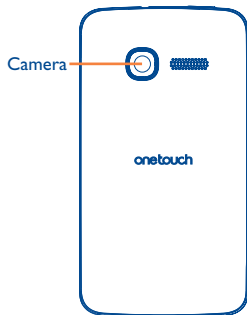
⁽¹⁾ Contact your network operator to check service availability.


This handset may contain materials, including applications and software in executable or source code form, which is submitted by third parties for inclusion in this handset (“Third Party Materials”). All third party materials in this handset are provided “as is”, without warranty of any kind, whether express or implied, including the implied warranties of merchantability, fitness for a particular purpose or use/third party application, interoperability with other materials or applications of the purchaser and non-infringement of copyright. The purchaser undertakes that TCT Mobile has complied with all quality obligations incumbent upon it as a manufacturer of mobile devices and handsets in complying with Intellectual Property rights. TCT Mobile will at no stage be responsible for the inability or failure of the Third Party Materials to operate on this handset or in interaction with any other devices of the purchaser. To the maximum extent permitted by law, TCT Mobile disclaims all liability for any claims, demands, suits or actions, and more specifically – but not limited to – tort law actions, under any theory of liability, arising out of the use, by whatever means, or attempts to use, such Third Party Materials. Moreover, the present Third Party Materials, which are provided free of charge by TCT Mobile, may be subject to paid updates and upgrades in the future; TCT Mobile waives any responsibility regarding such additional costs, which shall be borne exclusively by the purchaser. The availability of the applications may vary depending on the countries and the operators where the handset is used; in no event shall the list of possible applications and software provided with the handsets be considered as an undertaking from TCT Mobile; it shall remain merely as information for the purchaser. Therefore, TCT Mobile shall not be held responsible for the lack of availability of one or more applications wished for by the purchaser, as its availability depends on the country and the operator of the purchaser. TCT mobile reserves the right at any time to add or remove Third Party Materials from its handsets without prior notice; in no event shall TCT Mobile be held responsible by the purchaser for any consequences that such removal may have on the purchaser regarding the use or attempt to use such applications and Third Party Materials.

Your mobile.....

1.1 Keys and connectors





-  On Home screen, press to quickly access **Settings** menu or Notification panel; to launch quick search; to manage applications; to customize your Home screen by adding applications or changing wallpaper.
- On other screens, press to view options list.

 Press: Return to the Home screen or back to the central Home screen if it is extended.

Press and hold: Enter the recently used applications list.

 Go back to the previous menu or screen.

 Press: Lock the screen.
Light up the screen.

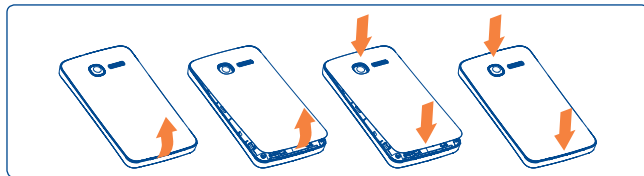
Press and hold: When phone is off, power on the phone.
When phone is on, enter Phone options:
Silent mode, Airplane mode, Power off.

 Press to adjust the Volume (in call/media playing mode)

1.2 Getting started

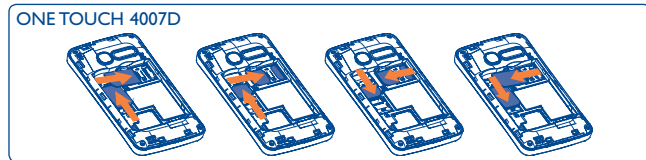
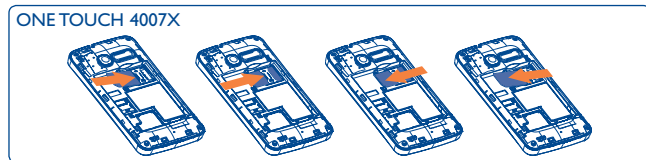
1.2.1 Set-up

Removing or installing the back cover



Inserting or removing the SIM card ⁽¹⁾

You must insert your SIM card to make phone calls. Please power off your phone and remove battery before inserting or removing the SIM card.



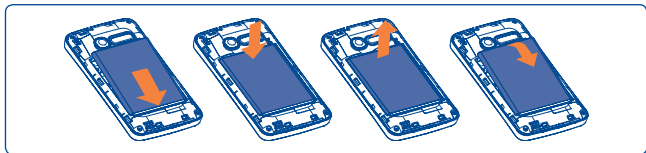
Place the SIM card with the chip facing downwards and slide it into its housing. Make sure that it is correctly inserted. To remove the card, press and slide it out.

⁽¹⁾ Check with your network operator to make sure that your SIM card is 3V or 1.8V compatible. The old 5 volt cards can no longer be used.



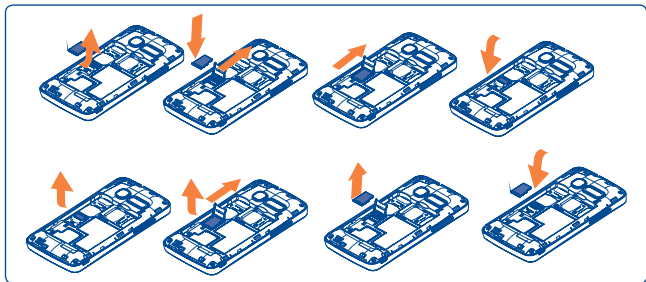
For dual SIM model, the SIM1 slot can support both 2G and 3G network, while the SIM2 slot can only support a 2G network .

Installing or removing the battery



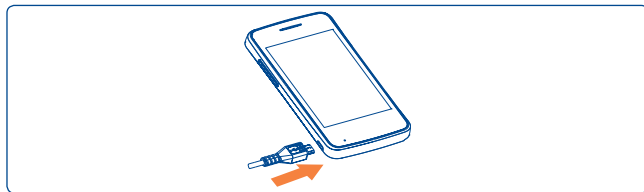
- Insert and click the battery into place, then close the phone cover.
- Unclip the cover, then remove the battery.

Installing and removing the microSD card



To release the microSD card holder, slide it in the direction of the arrow and lift it. Then insert the microSD card with the golden contact downward. Finally, turn down the microSD holder and slide it in the opposite direction to lock it.

Charging the battery



Connect the battery charger to your phone and mains socket respectively.

- The LED light will be lit up during battery charging.
- Be careful not to force the plug into the socket.
- Make sure the battery is correctly inserted before connecting the charger.
- The mains socket must be near to the phone and easily accessible (avoid electric extension cables).
- When using your telephone for the first time, charge the battery fully (approximately 4 hours).

You are advised to fully charge the battery (). Charging status is indicated by the depth of water on the lock screen. The depth increases as the phone is charged.



To reduce power consumption and energy waste, when battery is fully charged, disconnect your charger from the plug; switch off Wi-Fi, Bluetooth or background-running applications when not in use; reduce the backlight time, etc.

1.2.2 Power on your phone

Hold down the **Power** key until the phone powers on, type in your PIN code if necessary and then confirm. The Home screen is displayed.