



Product of Australia

Recorder Fingering WORKSHEETS

by Beatrice Wilder

CONTENTS

- 1: Just About C
- 2: Recognizing B and C
- 3: Two Cs and Two Ds
- 4: A, B, C and D
- 5: G, A, B, C and D
- 6: F through to High D
- 7: F sharp, G sharp and C sharp
- 8: Low E through to High C
- 9: B flat, E flat and A flat
- 10: Very High Notes
- 11: Sharps and Flats
- 12: More Sharps and Flats
- 13: Fingering Chart

Copyright © Beatrice Wilder 2012
Published in 2012 by **Music Fun**

P.O. Box 342 Katoomba NSW 2780
19 Millyard Lane Katoomba 2780

Phone: (02) 4782 3073
Fax: (02) 4782 6362
Email: info@musicfun.com.au
Web: www.musicfun.com.au

Please contact us with any questions about the
copying and use of our worksheets in your school.



Recorder Fingering

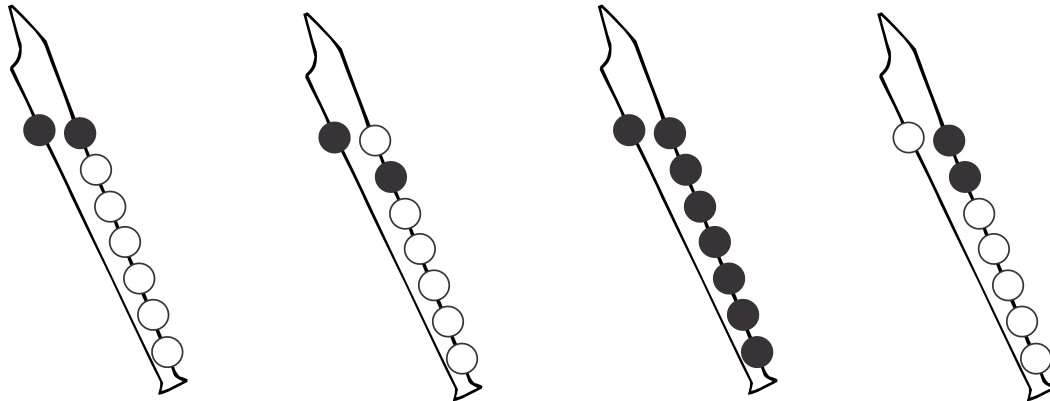
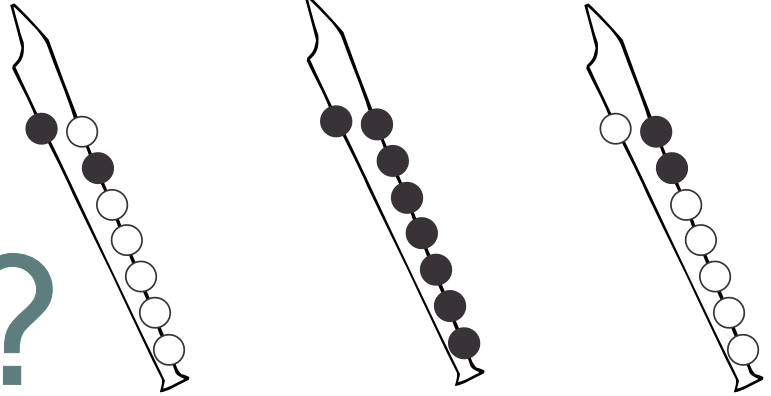
1 - Just About C

Name

One of these fingering patterns is NOT a C
Cross it out

One is middle C
One is high C
One is not C

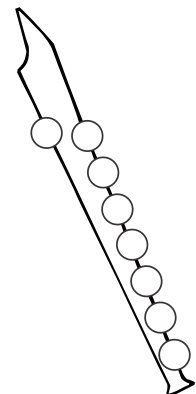
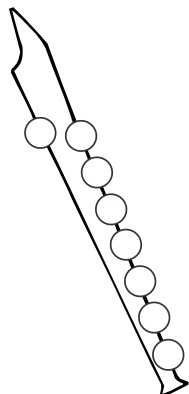
C ?



Draw a line connecting the fingering pattern to the correct note on the staff
Cross out the patterns that do not fit.



Fill in the fingering pattern to match the note on the staff:



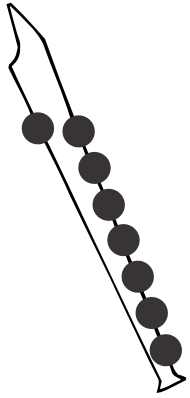


Recorder Fingering

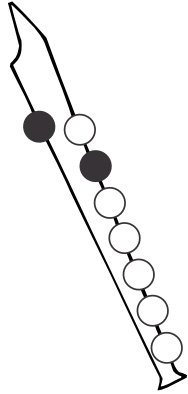
2 - Recognizing B and C

Name

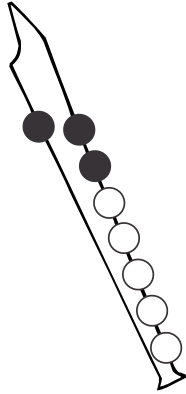
Label these fingering patterns B, middle C or high C
If it is neither a B nor a C, **Cross it out**



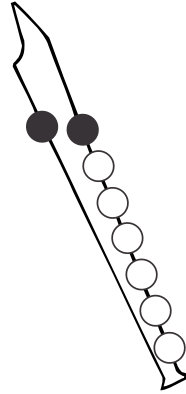
.....



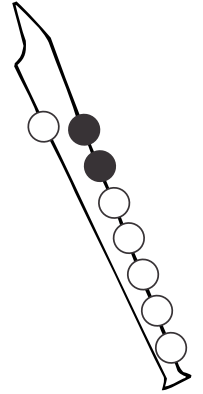
.....



.....



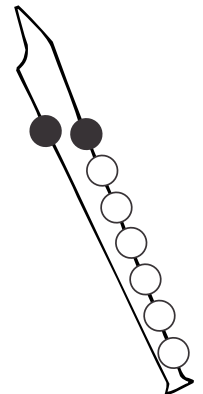
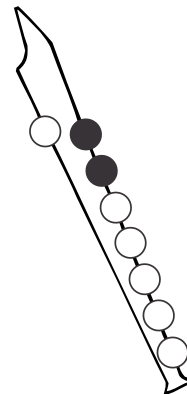
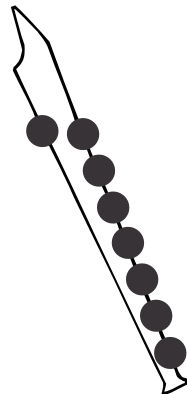
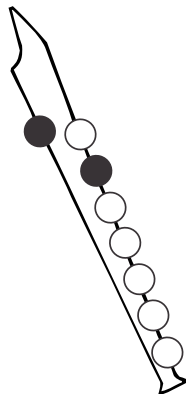
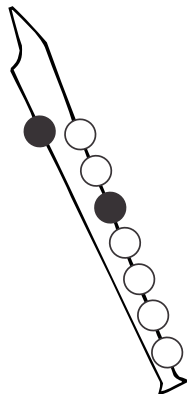
.....



.....



.....



.....

Draw a line connecting the fingering pattern to the correct note on the staff. Write the letter name.
Cross out any pattern that does not fit.

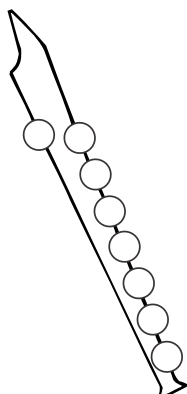


.....

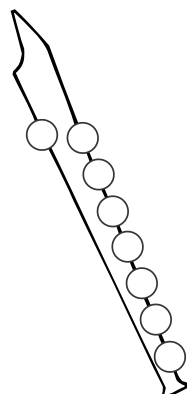
Fill in each fingering pattern to match the note on the staff
and give it the correct letter name:



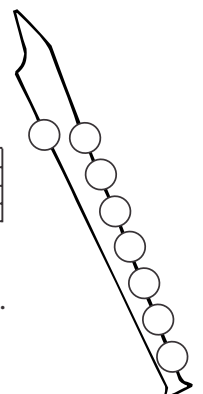
.....



.....



.....



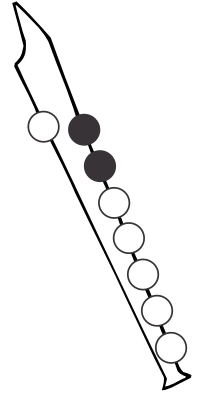
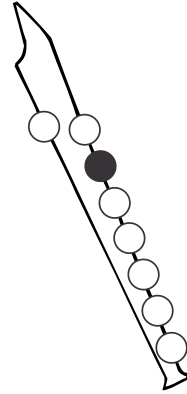
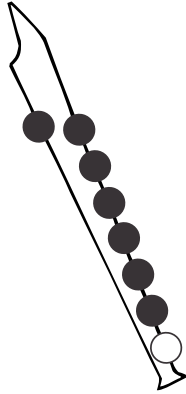
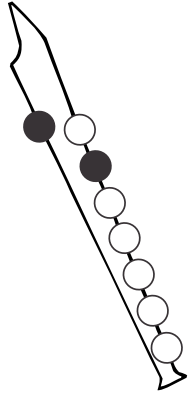
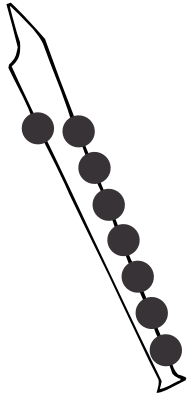


Recorder Fingering

3 - Two Cs and Two Ds

Name

Label these fingering patterns middle C, high C, low D or high D
If it is neither a C nor a D, **Cross it out**



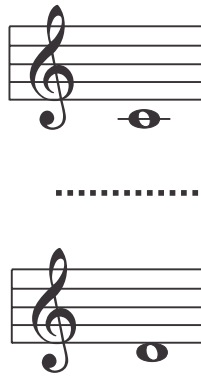
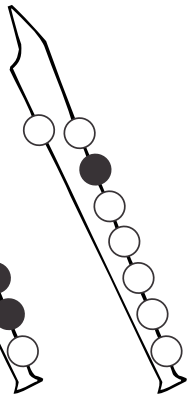
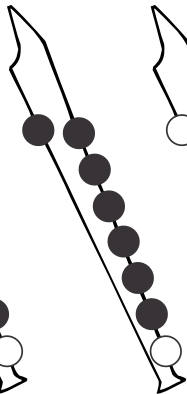
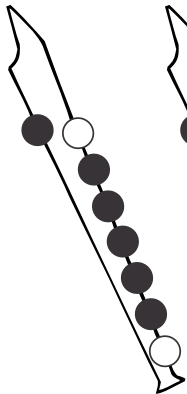
.....

.....

.....

.....

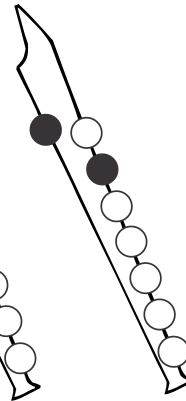
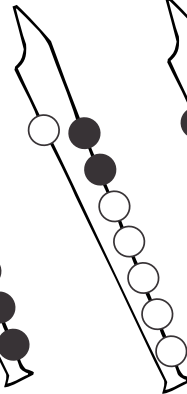
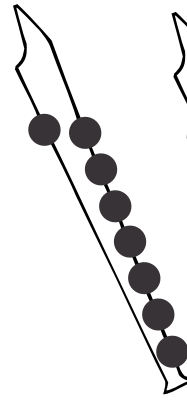
.....



.....



.....



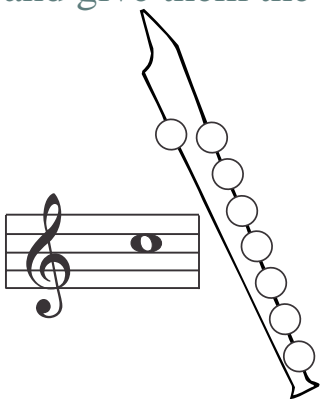
.....

Draw a line connecting the fingering pattern to the correct note on the staff
Cross out any pattern that does not fit.

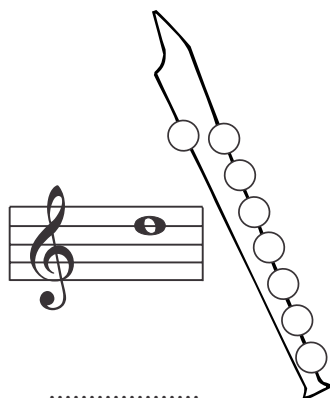


.....

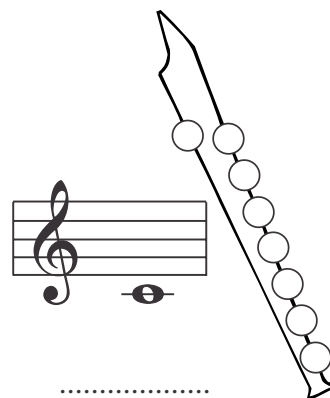
Fill in the fingering patterns to match the notes on the staves
and give them the correct letter names:



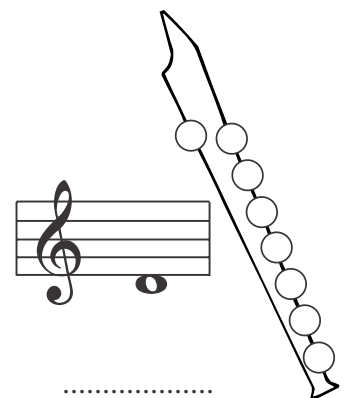
.....



.....



.....



.....



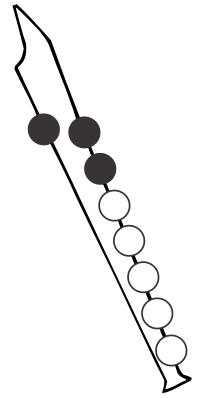
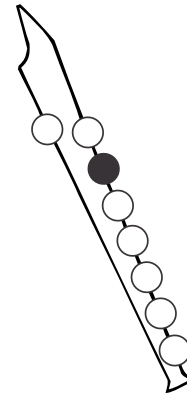
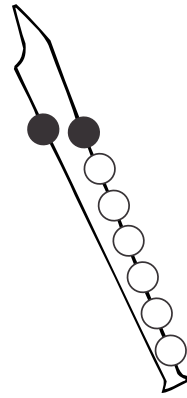
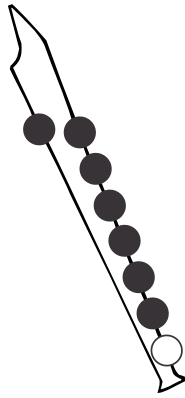
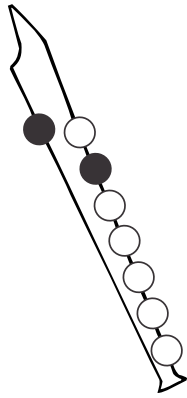
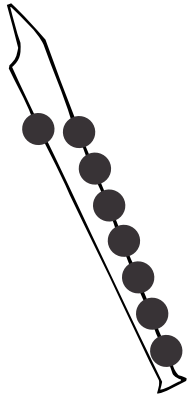
Recorder Fingering

4 - A, B, C and D

Name

Label these fingering patterns A, B, middle C, high C, low D and high D.

Draw a line connecting the fingering pattern to the correct note on the staff:



.....

.....

.....

.....

.....

.....



.....

.....

.....

.....

.....

.....

Fill in the correct notes on the staves below and colour in the fingering patterns on the recorders to match:



B



Middle C



A



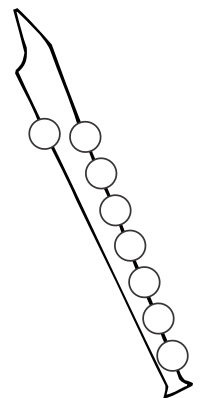
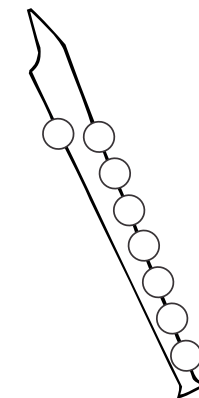
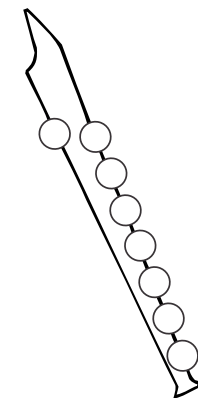
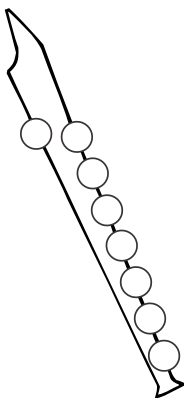
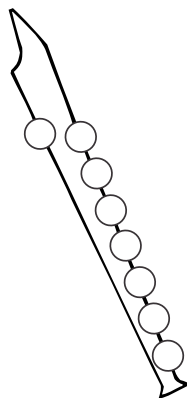
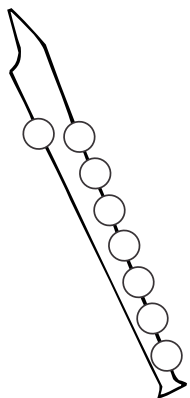
High C



Low D



High D





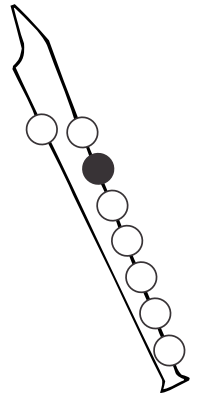
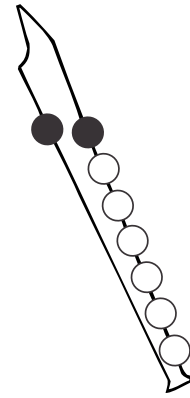
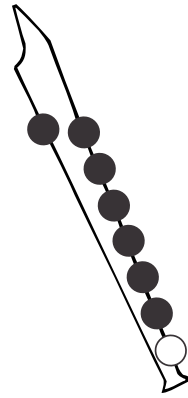
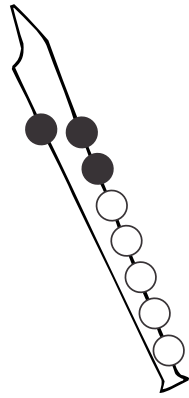
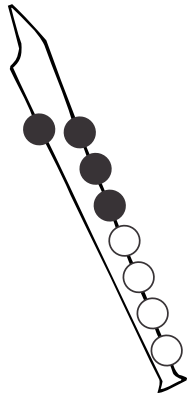
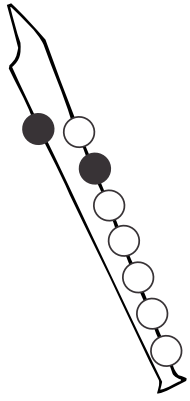
Recorder Fingering

5 - G, A, B, C and D

Name

Label these fingering patterns G, A, B, C, low D and high D.

Draw a line connecting the fingering pattern to the correct note on the staff:



.....

.....

.....

.....

.....

.....



.....

.....

.....

.....

.....

.....

Fill in the correct notes on the staves below and colour in the fingering patterns on the recorders to match:



Low D



B



High C



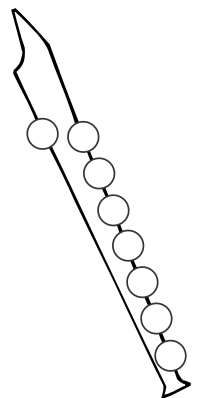
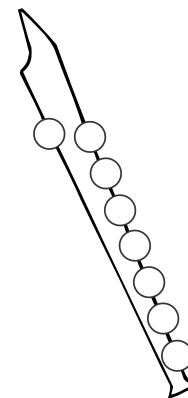
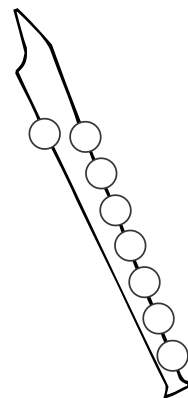
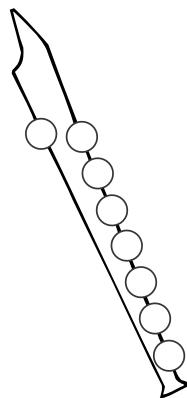
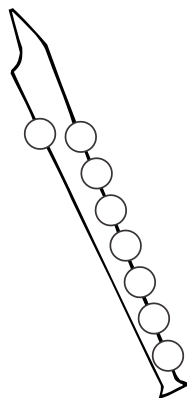
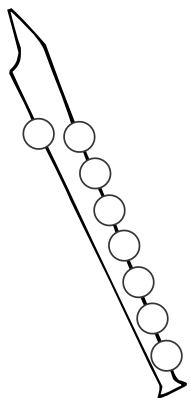
A



G



High D





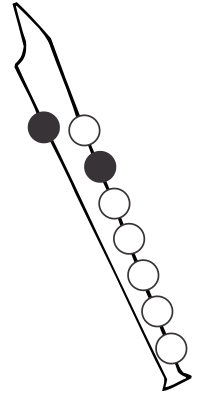
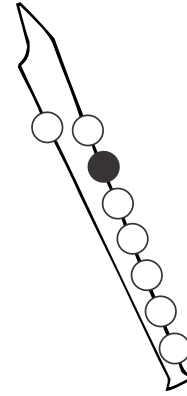
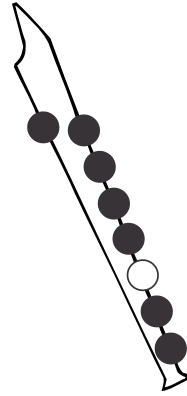
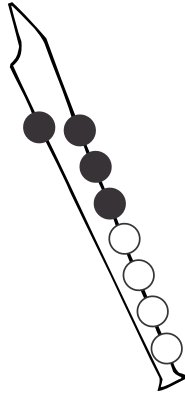
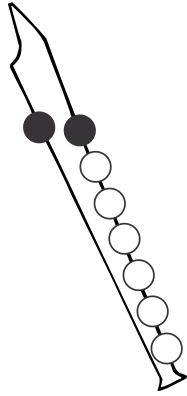
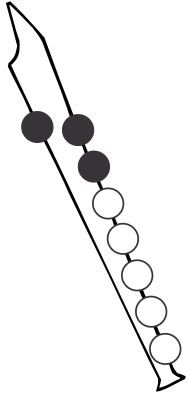
Recorder Fingering

6 - F to high D

Name

Label these fingering patterns F, G, A, B, C and D.

Draw a line connecting the fingering pattern to the correct note on the staff:



.....

.....

.....

.....

.....

.....



.....

.....

.....

.....

.....

.....

Fill in the correct notes on the staves below and colour in the fingering patterns on the recorders to match:



B



High C



F



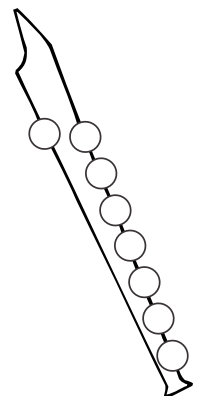
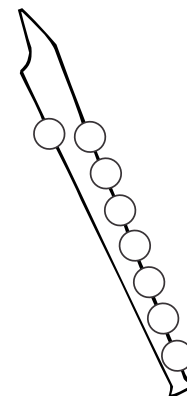
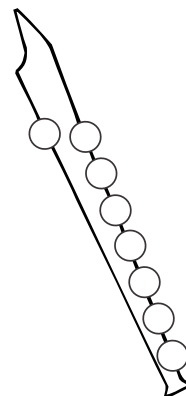
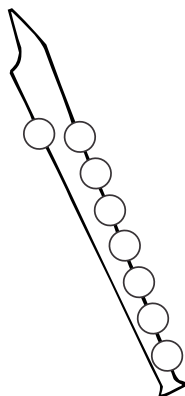
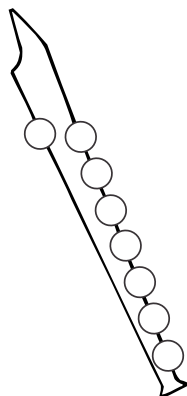
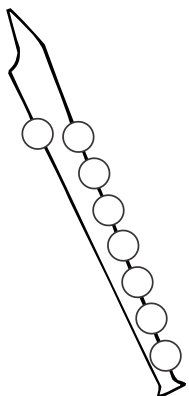
High D



A



G





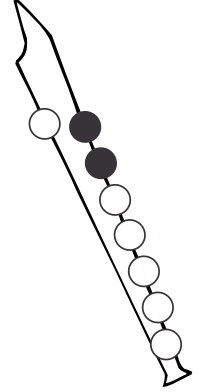
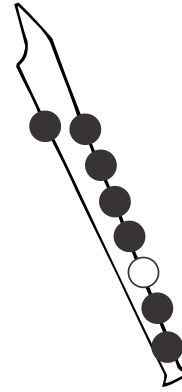
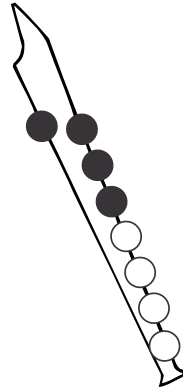
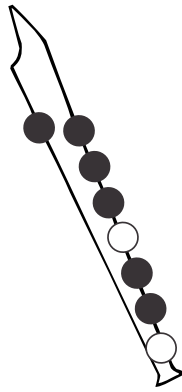
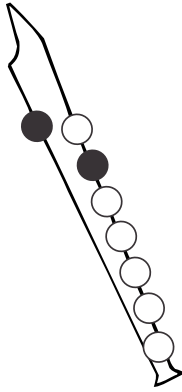
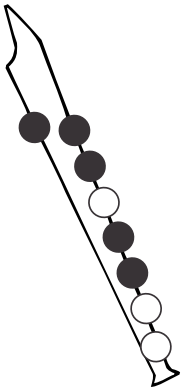
Recorder Fingering

7 - F sharp, G sharp and C sharp

Name

Label these fingering patterns F, F sharp, G, G sharp, C and C sharp.

Draw a line connecting the fingering pattern to the correct note on the staff:



.....

.....

.....

.....

.....

.....



.....

.....

.....

.....

.....

.....

Fill in the correct notes on the staves below and colour in the fingering patterns on the recorders to match:



G



F#



C#



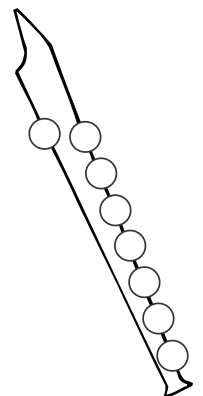
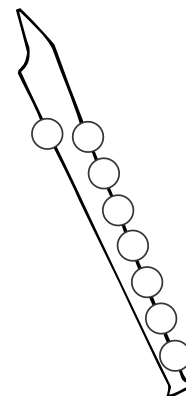
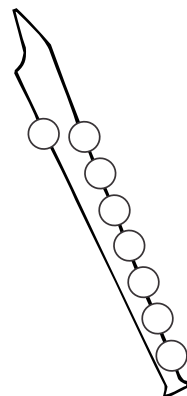
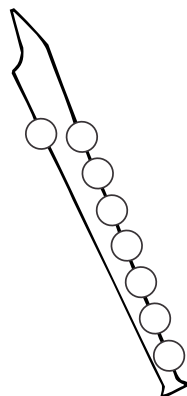
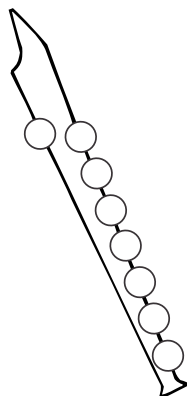
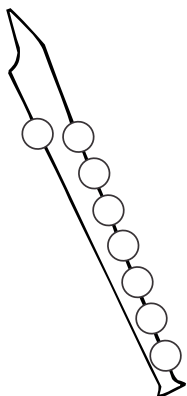
G#



C



F





Recorder Fingering

8 - Low E through to High C

Name

Label these fingering patterns E, F, G, A, B and C.

Draw a line connecting the fingering pattern to the correct note on the staff:

| | | | | | |
|-------|-------|-------|-------|-------|-------|
| | | | | | |
| | | | | | |
| | | | | | |
| | | | | | |

Fill in the correct notes on the staves below and colour in the fingering patterns on the recorders to match:

| | | | | | |
|---|---|---|---|---|---|
| | | | | | |
| C | E | B | F | A | G |
| | | | | | |



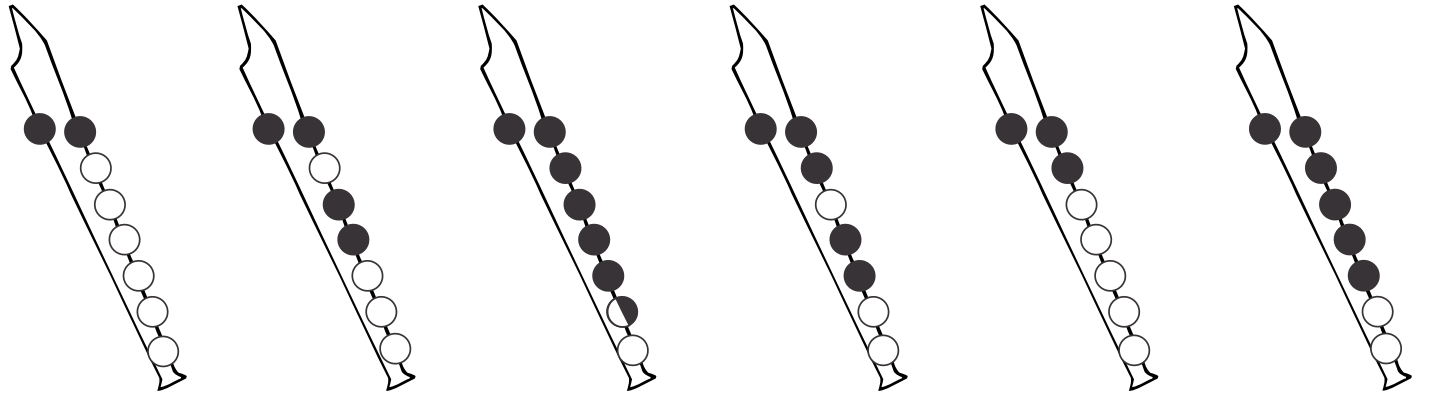
Recorder Fingering

9 - B flat, E flat and A flat

Name

Label these fingering patterns B, B flat, E, E flat, A and A flat.

Draw a line connecting the fingering pattern to the correct note on the staff:

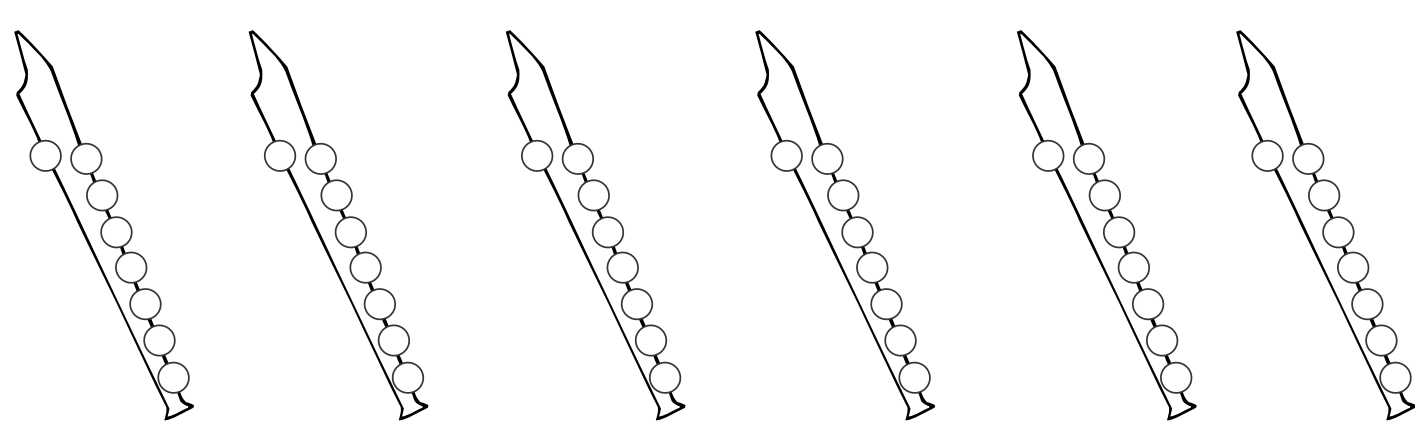


.....



.....

Fill in the correct notes on the staves below and colour in the fingering patterns on the recorders to match:





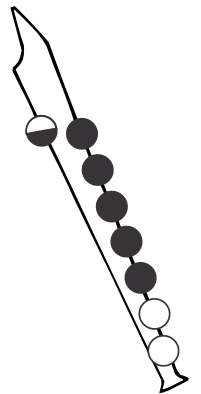
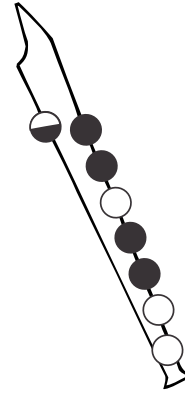
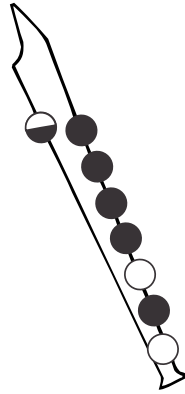
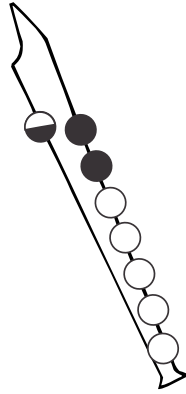
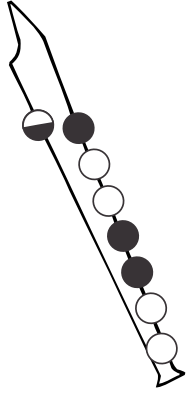
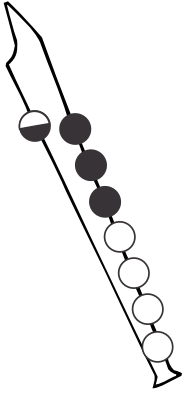
Recorder Fingering

10 - Very High Notes

Name

Label these fingering patterns E, F, G, A, B and C.

Draw a line connecting the fingering pattern to the correct note on the staff:



.....

.....

.....

.....

.....

.....



.....

.....

.....

.....

.....

.....

Fill in the correct notes on the staves below and colour in the fingering patterns on the recorders to match:



A



C



B



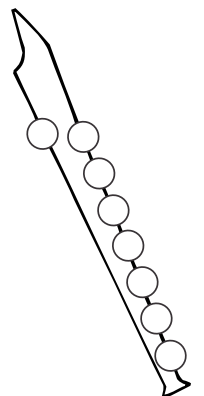
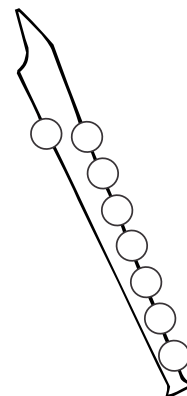
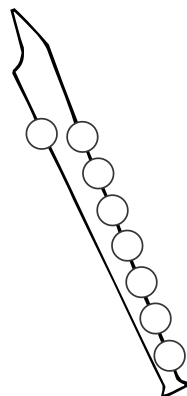
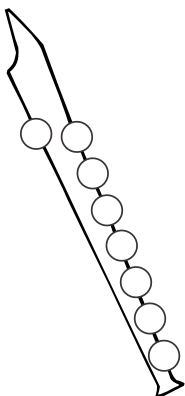
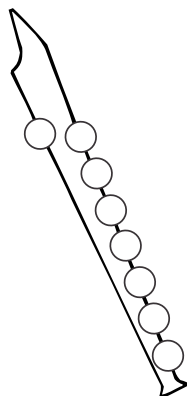
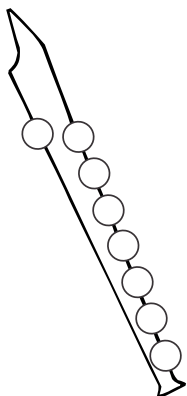
B



G



E





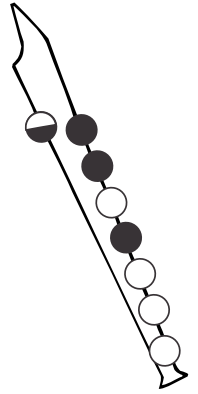
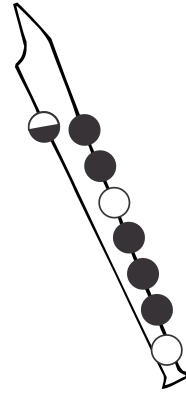
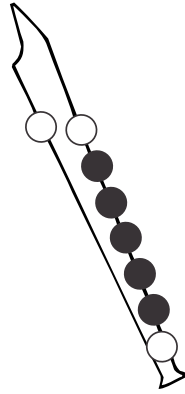
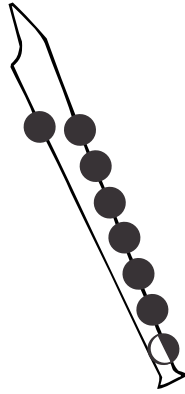
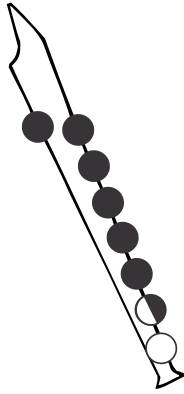
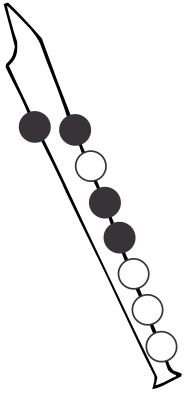
Recorder Fingering

11 - Sharps and Flats

Name

Label these fingering patterns B flat, D sharp, D flat, G sharp, A sharp and E flat.

Draw a line connecting the fingering pattern to the correct note on the staff:



.....

.....

.....

.....

.....

.....



.....

.....

.....

.....

.....

.....

Fill in the correct notes on the staves below and colour in the fingering patterns on the recorders to match:



B \flat



D \sharp



D \flat



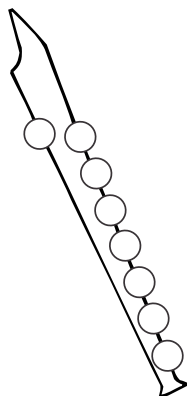
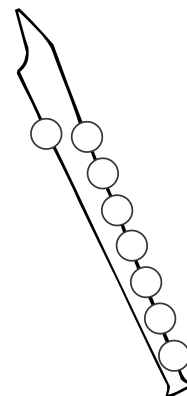
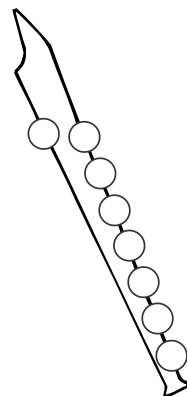
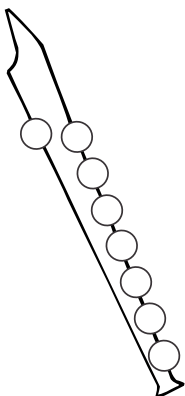
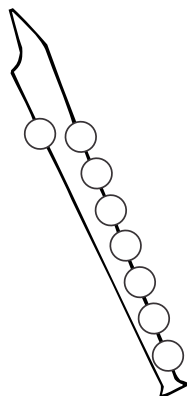
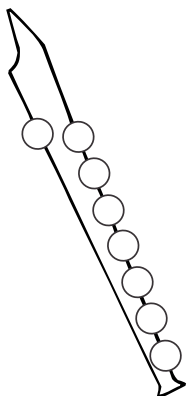
G \sharp



E \flat



A \sharp





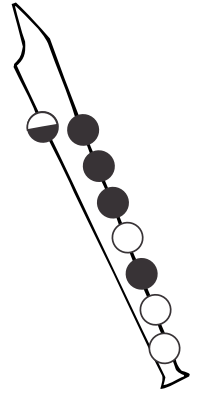
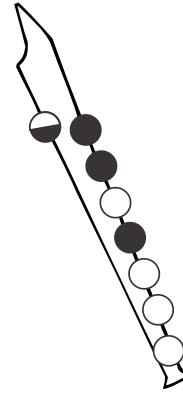
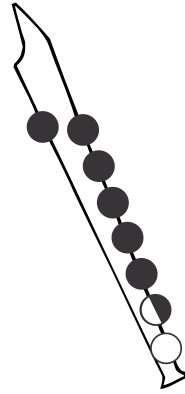
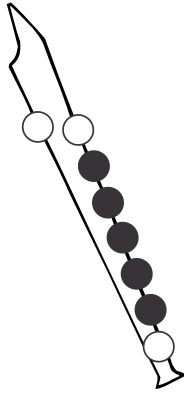
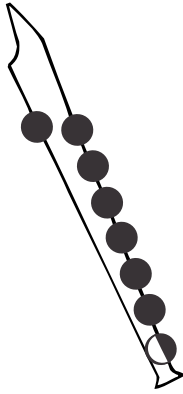
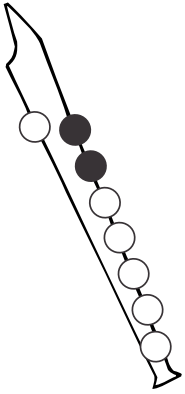
Recorder Fingering

12 - More Sharps and Flats

Name

Label these fingering patterns F sharp, C sharp, D sharp, D flat, E flat and A flat.

Draw a line connecting the fingering pattern to the correct note on the staff:



.....

.....

.....

.....

.....

.....



.....

.....

.....

.....

.....

.....

Fill in the correct notes on the staves below and colour in the fingering patterns on the recorders to match:



D \flat



F \sharp



E \flat



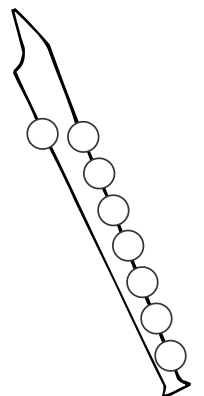
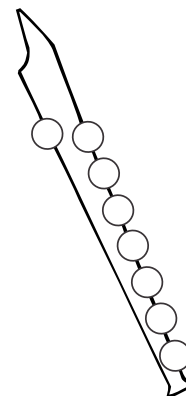
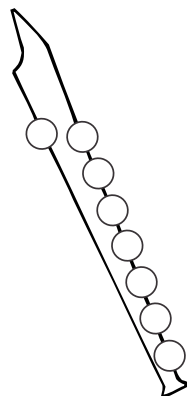
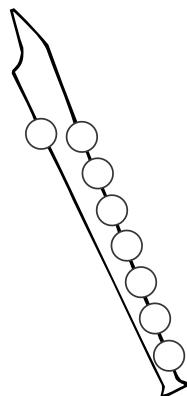
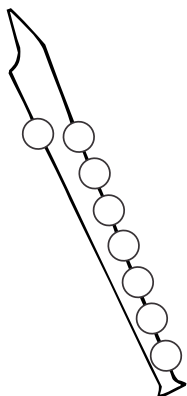
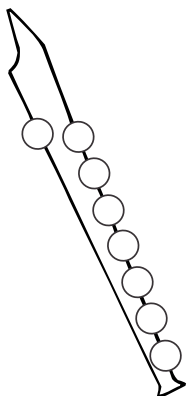
C \sharp



A \flat



D \sharp





Recorder Fingering

13 - Fingering Chart

| | | | | | | | |
|---|---|---|---|---|---|---|---|
| C | D | E | F | G | A | B | C |
| | | | | | | | |
| | | | | | | | |

| | | | | | | |
|---|---|---|---|---|---|---|
| D | E | F | G | A | B | C |
| | | | | | | |
| | | | | | | |

| | | | | | | | | | |
|----|----|----|----|----|----|----|----|----|----|
| C# | Db | D# | Eb | F# | Gb | G# | Ab | A# | Bb |
| | | | | | | | | | |
| | | | | | | | | | |

| | | | | | | | | | |
|----|----|----|----|----|----|----|----|----|----|
| C# | Db | D# | Eb | F# | Gb | G# | Ab | A# | Bb |
| | | | | | | | | | |
| | | | | | | | | | |