

GRADING MANUAL



S. P. GEMS PVT. LTD.

Brown is our Passion

www.browndiamonds.in

Index

◆ Introduction	01
◆ Color & Color Hue	02
◆ Cut	04
◆ Polish	05
◆ Symmetry	06
◆ Clarity	07
◆ Inclusion Pattern	08
◆ Relief of Inclusions	10
◆ Table Inclusions	11
◆ Black (Nartical) Inclusions	12
◆ Open Inclusions	13
◆ Internal Graining	14
◆ Naked Eye Appeal	15
◆ Luster	16
◆ Fluorescence & Fluorescence Color	17
◆ Culet	18

www.browndiamonds.in

C-1 to C-8 Brown Diamond's Color Grading Scale



www.browndiamonds.in

Introduction :

Mr. Hiten Shah founder of the company started this business a decade ago from the ground level with his 10 years of relentless efforts and passion for brown diamonds he overcame many hurdles and reached this level.



Our company's vision is to be a departmental store for brown diamonds from where customer will find all shades, shapes, sizes and clarity of brown diamonds under the same roof.

We pride ourselves in providing services and guidance that matches the superior quality of our products. We believe in operating a genuine and ethical business.

As in fancy color diamonds there exists the great chance for fetching high prices from customers, but we don't take such chances and we believe in providing correct pricing to our customers. We quote the price as individual stone talks. We do believe in fast business without wasting much time of our customers.

Whatever be the occasion, whatever be the choice, we at S.P Gems always have something that matches our customer's sentiments.

S. P. Gems Pvt. Ltd. welcomes you all to join its family for experiencing passionate commitment towards ethical standards & Customer's satisfaction.

Mission Statement

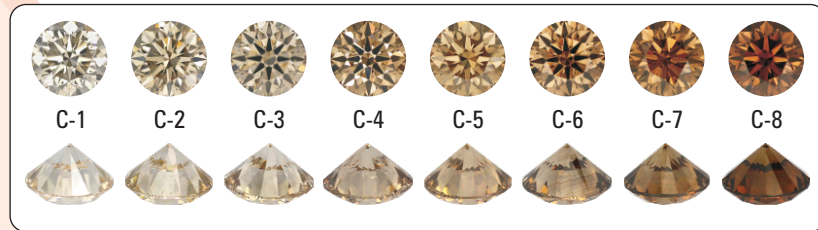
"We at S. P. Gems Pvt. Ltd. thrive towards being a synonyms for brown diamonds, by offering high quality products & services. We strive to always exceed the expectation of our customers, employees & community by making our business simple, transparent & trustworthy."

Color & Color Hue:

As Color of Brown Diamond Plays a vital role in fetching more price & also it plays important role for Naked Eye Appeal of the stone, we take special care while grading color of the Brown Diamond.

Color: We grade color as follows:

Natural Fancy Very Light Brown	C1	Light Champagne
Natural Fancy Light Brown	C2	Light Champagne
Natural Fancy Medium Brown	C3	Medium Champagne
Natural Fancy Brown	C4	Medium Champagne
Natural Fancy Intense Brown	C5	Dark Champagne
Natural Fancy Vivid Brown	C6	Dark Champagne
Natural Fancy Deep Brown	C7	Fancy Cognac
Natural Fancy Vibrant Brown	C8	Fancy Very Rare Cognac



As those dealing in Brown are very much aware of C1 to C7 color scale

We grade Light Champagne Brown Diamonds (C1 & C2) as Natural Fancy Very light Brown & Natural Fancy light Brown respectively. If they are Medium Champagne Brown Diamonds (C3 & C4) we grade them as Natural Fancy Medium Brown & Natural Fancy Brown respectively. If they are Dark Champagne Brown Diamonds (C5 & C6) we grade them as Natural Fancy Intense Brown & Natural Fancy Vivid Brown. If the Diamond is Fancy Cognac i.e. C7 we grade them as Natural Fancy Deep Brown. We also grade C8 if the Diamond's color is Fancy Very Rare Cognac as Natural Fancy Vibrant Brown.



Color Hue:

Light, Fancy Light, Fancy, Fancy Intense, Fancy Vivid and Fancy Dark are fancy grades representing the combined effect of tone and saturation on a certain hue. These fancy grades vary in intensity, in different hues since the highest saturation levels are reached in different levels of tones according to the hue. This phenomenon is apparent when one examines the asymmetrical appearance of the makeup of color space.

The Color Hue, which we are aware of in most cases, is Fancy Orange Brown (Mix tone or Hue of Orange & Brown). Fancy Pinkish Brown (Mix tone or Hue of Pink & Brown). Fancy Brownish Greenish Yellow (Mix tone or Hue of Brown, Green & Yellow). Like wise the grade is given as per the Hue or tone present in the Diamond.

Now for E.g.:

If our diamond is C7 i.e. Natural Fancy deep Brown with orange and red hue or color tone from face up. We will grade it as Natural Fancy deep reddish orangish Brown.

Cut:

All of the four C's have an effect on the beauty of a diamond, but the cut is most important factor. The cut (number of facets, proportions, symmetry, etc.) determines a diamond's brilliance. When light enters the top of the diamond, it reflects and refracts within the diamond. How light is directed through the number of facets and the placement of those facets in relationship to each other determine a diamond.

The way in which a diamond is cut determines how brilliant the diamond will be. A well-cut diamond reflects the maximum amount of light that enters it. The exact angles of the ideal cut diamond have been mathematically calculated and proven to reflect the maximum amount of light.

We grade Cut in following order :



Cut

Grades	Description
H & A	Heart & Arrow Cut
ID	Ideal Cut
EX	Excellent Cut
VG	Very Good Cut
GD	Good Cut
FR	Fair Cut

{Note: We don't provide cut grades in Fancy Shapes}

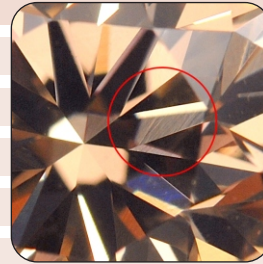
Polish:

Polish refers to the smoothness of the surface of every facet that is cut into a raw diamond. This part of the diamond cutting process requires the utmost care and attention to minute detail. With modern technology, polish does not vary nearly as much now as it did in years past. Excellent polish greatly enhances a diamond's brilliance because it creates less diffusion as light enters and exits the diamond. Even a diamond with slight depth or symmetry problems will appear brilliant if the polish is of the highest grade.

Diamond Polish refers to how smooth the outside surface of a diamond has been polished. Polish is the quality of a Diamond's surface condition as a result of the polishing process or to blemishes created after the cutting process, often referred to as "wear and tear". Polish features are located on the surface & do not visibly penetrate into the diamond at 10X Magnification.

We grade Polish as per below order :

Grades	Description
ID	Ideal Polish
EX	Excellent Polish
VG	Very Good Polish
GD	Good Polish
FR	Fair Polish



Polishing Lines

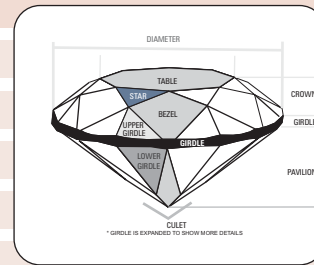
Symmetry:

“Symmetry” refers to the exactness of the shape of a diamond, and the Symmetrical arrangement and even placement of the facet. Better the symmetry better is the light behavior, which results in an attractive diamond.

Symmetry is also assessed on a scale ranging from excellent to fair.

We Grade Symmetry as follows :

Grades	Description
ID	Ideal Symmetry
EX	Excellent Symmetry
VG	Very Good Symmetry
GD	Good Symmetry
FR	Fair Symmetry



Symmetry

Clarity Grading:

Clarity is a gemstone's relative freedom from clarity characteristics, which are classified as inclusions and blemishes. Inclusions are enclosed within a diamond or they extend into the diamond from its surface. Blemishes are confined to the diamond's surface. Inclusions typically have more influence on a diamond's clarity grade than blemishes.

While Grading Clarity five factors plays very important role, which are as follows:

- 1) Size of Inclusions
- 2) Number of Inclusions
- 3) Position of Inclusions
- 4) Nature of Inclusions
- 5) Relief of Inclusions or Impact of Inclusions

We grade Clarity in following Order. (FL TO I6):



SI - 2, Clarity

- FL
- IF
- VVS1
- VVS2
- VS1
- VS2
- SI1
- SI2
- SI3
- I1
- I2
- I3
- I4
- I5
- I6

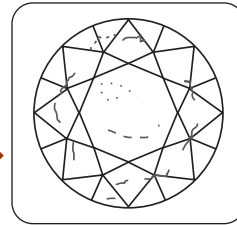
Inclusion Pattern:

One of the most important factors for informing our customers about the inclusions present in the stone is to Provide Pattern of Inclusion. Even without looking at the stone through Inclusion Pattern Customers can roughly imagine how the Diamond will look from face up. Whether inclusions are spreaded in the stone or concentrated. Inclusion Pattern also indicates how densely the inclusions are located within the Diamond.

Inclusion Pattern is graded as below:

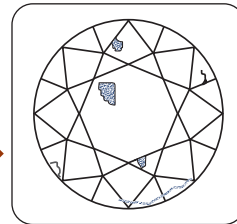
- 1) **Spreaded (S1):** Spreaded Inclusion(S1) indicates inclusions are Very light & spreaded (Scattered) over the stone

Diagram indicating the inclusion spreaded all over the stone Clarity – SI2



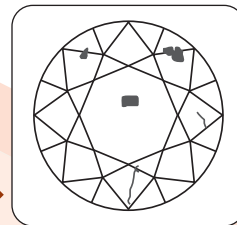
- 2) **Semi Spreaded (S2):** Semi Spreaded (S2) indicates inclusions are light & spreaded over the stone.

Diagram indicating the inclusion semi spreaded over the stone Clarity – SI1



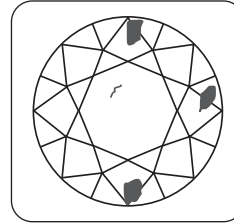
- 3) **Light Concentrated (C1):** Light Concentrated (C1) indicates more inclusions are located at different places, which are light concentrated.

Diagram indicating the inclusion light concentrated over the stone Clarity – SI2



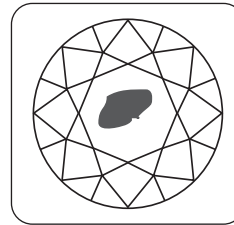
- 4) **Semi Concentrated (C2):** Semi Concentrated (C2) indicates inclusion are Concentrated (Depending on the Clarity here from VS1 to SI2 this is the last grade to grade IP so till SI2 inclusion are Concentrated at particular location & from SI3 grade even two inclusions opposite to each other looking concentrated from face up will come in C2 grade.)

Diagram indicating the inclusion semi concentrated over the stone Clarity – SI3



- 5) **Concentrated (C3):** Concentrated grade starts from SI3 Clarity. Concentrated (C3) indicates inclusion located at particular portion of the stone which looks Hard from face up.

Diagram indicating the inclusion concentrated over the stone Clarity – I2



{Note: We grade Inclusion Pattern from VS1 Clarity till I6}


From VS1 to SI2 = S1 to C2 grade is applicable. C3 grade starts from Clarity SI3

From SI3 to I6 = S1 to C3 is applicable. {All IP grades are applicable.}

Relief of Inclusions:

Relief of Inclusions indicates Impact of Inclusions from Face-Up. As Relief of Inclusions plays a vital role while grading the Clarity of the stone, we take utmost care in grading Relief of Inclusion. We grade Relief of Inclusion from its overall impact from Face-Up.

We grade Relief of Inclusion as below:

Grades	Description	
R0	No Relief	
R1	Very Light Relief	
R2	Light Relief	
R3	Medium Relief	
R4	Obvious Relief	
R5	Heavy Relief	R 4 - Obvious Relief

Explanation for Relief of Inclusions.


- R0** Indicates No Relief of Inclusions. Mainly this grade will come in VVS2 Clarity as pin-point inclusions don't have any Relief from Face-Up.
- R1** Indicates Minor Relief of Inclusions. Mainly this grade will come in VS1 or VS2 Clarity. As inclusions are very less in number & generally have Minor Relief from Face-Up.
- R2** Indicates Medium Relief of Inclusions. Mainly this grade will come in SI1 or SI2 Clarity. As inclusions will create Slight or Medium Relief or Impact from Face-Up.
- R3** Indicates Major Relief of Inclusions. Mainly this grade will come in I3 or I1 Clarity as Inclusion will look hard from Face-Up in most of the cases.
- R4** Indicates Obvious Relief of Inclusions. Mainly this grade will come in I2, I3 or I4 Clarity as Inclusions will look extremely hard from Face-Up. Their Relief can also be seen Naked Eye.
- R5** Indicates heavy Relief of Inclusions Mainly this grade will come in I3, I4, I5, I6 Clarity as Inclusions will look very heavy from face-up. Their Relief can also be seen Naked Eye.

Table Inclusion:

Out of the total inclusions present in the stone what proportion of them are in table grade of table inclusion is finalized (Here Impact of the Inclusion plays very Important role in grading Table Inclusions). As some of the customers are choosy about inclusion in table they can make selection of the stone by looking at our info provided.

We Grade Table Inclusion as follows :

Grades	Description
T0	Table Clean
T1	Minor In Table
T2	Medium In Table
T3	Major in Table
T4	Mostly in Table



T 2 - Medium in Table

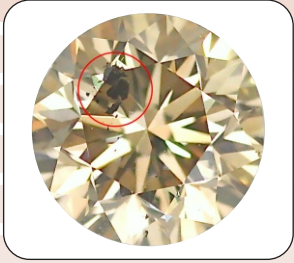
- T0** indicates No Inclusions are present in the Table.
- T1** indicates Minor inclusion (0 to 10% of the total) is present in the Table.
- T2** indicates Medium Inclusion (10 to 35% of the total) is present in the Table.
- T3** indicates Major Inclusion (35 to 80% of the total) is present in the Table.
- T4** indicates Most Inclusion (80 % & above of the total) is present in the Table.

Black (Nartical) inclusion:

Black (Nartical) Inclusions: Out of the total inclusions present in the stone what proportion of them are black, grade of Black or Nartical inclusion is finalized.

We grade Black Inclusion as follows.

Grades	Description
NT 0	(No Black)
NT 1	(Minor Black)
NT 2	(Medium Black)
NT 3	(Major Black)
NT 4	(Mostly Black)



NT 3 - Major Black

- NT 0** indicates No Black Inclusions are present in the stone. It's a No Black Stone.
- NT 1** indicates Minor Inclusion (0 to 10% of the total) is Black in the Stone.
- NT 2** indicates Medium Inclusion (10 to 35% of the total) is Black in the Stone.
- NT 3** indicated Major Inclusion (35 to 80% of the total) is Black in the Stone.
- NT 4** indicates Most Inclusion (80 % & above of the total) is Black in the Stone.

Open Inclusions:

We do provide grades for Open Inclusions in the stones, as opens are also very much imp as far as providing the information to the customer is concerned.

When inclusions within the Diamonds are open near the surface then such flaws are called Opens. It can be a chip, nick, pit or cavity. Naturals on the surface are also considered in Opens.

We also provide location of the Open Inclusion where it is located whether it's in Table or Crown or Pavilion.

Locations of the Open Inclusions are as below:

TOP = Table Opens

COP = Crown Opens


Pop = Pavilion Opens

Grades for Open Inclusions:

Grades will remain the same as below in all the location whether it's TOP, COP or POP...

We grade open inclusions as follows:

Grades	Description
NN	(No opens)
VS	(Very Small Open)
SM	(Small Open)
MD	(Medium Open)
LG	(Large Open)
VL	(Very large)



LG - Large Open

Internal Graining:

Internal Graining are lines, Angles or curves that might appear whitish, colored or reflective or affect transparency at 10X, caused by irregularities in crystal growth. Internal Graining are not invisible to the naked eye.

We do provide grades for Internal Graining in the stones. Internal Graining also affects the face up look of the stone. Thus becomes important to grade them.

We grade Fluorescence as follows:

Grades	Description
IG 0	No Internal Graining
IG 1	Light Internal Graining
IG 2	Medium Internal Graining
IG 3	Heavy Internal Graining



IG 3 Heavy Internal Graining

- IG 0** indicates No Internal Graining.
- IG 1** indicates very light internal graining. They are not easily visible. We have to search them precisely through 10X loupe. Thus it doesn't affect Face up look of the stone to the great extent.
- IG 2** indicates Medium Internal Graining. They are easily visible through 10X loupe. It does affect the Face Up look of the stone.
- IG 3** indicates Heavy Internal Graining. They affect the overall Face up of the stone. Sometimes in higher clarity grade due to its heavy impact Clarity of the stone is also downgraded.

{Note: We grade Internal Graining in the stones having Clarity SI3 & better towards VVS1}

Naked Eye Appeal:

Naked Eye Appeal is Universal Term accepted by majority of the Customers.

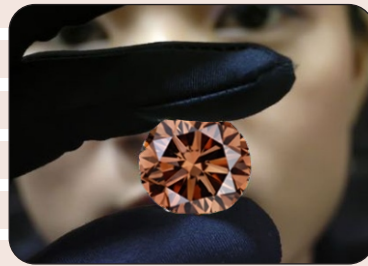
We want to give our Customers grades for Naked Eye Appeal for more advanced understanding of the Beauty Of Diamonds from its Face Up.

Naked Eye Appeal the word itself describe its meaning, generally customers before finalizing a diamond for buying see its impact naked eye.

We grade naked eye appeal on the basis of Diamond's Make (Cut),Color tone from Face Up & Impact of Inclusion from Face Up.

We Grade Naked Eye Appeal as Follows :

- Exclusive
- Excellent
- Decent
- Very Good
- Fair
- Poor



Naked Eye Appeal

Luster:

Luster is basically the light reflected from the surface of the diamond.

It is also referred to as Brilliance, Sparkle or Fire. Luster plays very important role as it is directly related to the beauty of the diamond from its Face Up.

We grade luster in following order:

- Excellent
- Very Good
- Good
- Fair



Luster

For the stones having Milky Clouds, We grade Luster as follows:

- ML1** = Slight Milky
- ML2** = Medium Milky
- ML3** = Heavy Milky

Fluorescence:

Fluorescence (a variety of luminescence) is the light radiation due to a reaction of the material atoms when exposed to incident light.

Emission of light by a diamond when exposed to ultraviolet radiation is termed as Fluorescence. In better colors presence of Fluorescence reduces the Brilliance of the stone while in weaker colors presence of Fluorescence adds more Brilliance to the stone.

We grade Fluorescence as follows:

Grades	Description
FL-0	None
FL-1	Faint
FL-2	Medium
FL-3	Strong
FL-4	Very Strong



Fluorescence

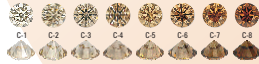
We do provide Fluorescence Color also if any.

Fluorescence colors like White, Blue, Yellow, Green, and Orange are having direct impact on the overall color of the diamond.

Depending on the nature and type of bonds that other elements form With Carbon atoms of a diamond crystal, fluorescence can be of different colors.

Brown Diamond Color Scale

Natural Fancy Very Light Brown	C1	Light Champagne
Natural Fancy Light Brown	C2	Light Champagne
Natural Fancy Medium Brown	C3	Medium Champagne
Natural Fancy Brown	C4	Medium Champagne
Natural Fancy Intense Brown	C5	Dark Champagne
Natural Fancy Vivid Brown	C6	Dark Champagne
Natural Fancy Deep Brown	C7	Fancy Cognac
Natural Fancy Vibrant Brown	C8	Fancy Very Rare Cognac



Naked Eye Appeal & Relief of Inclusion

We grade naked eye appeal on the basis of Diamond Make (Cut) Color Tone from face-up & impact of inclusion from face - up.

We grade Relief of Inclusion on the basis of overall Impact of inclusion from face-up.

Naked Eye Appeal Scale	Relief of Inclusion Scale
Exclusive	No Relief
Excellent	Very Light Relief
Decent	Light Relief
Very Good	Medium Relief
Fair	Obvious Relief
Poor	Heavy Relief

Important Notes :

- We grade internal grainings from clarity SI 3 & better towards VVS 1
- We grade inclusion pattern from VS clarity till I-6 From VS 1 to SI 2 = S 1 to C 2 grades are applicable From SI 3 to S 1 = S 1 to C 2 grades are applicable
- We grade Relief of Inclusion on the basis of Overall Impact of Inclusion from Face-up (Applicable from VVS 2 Clarity till I6)

www.browndiamonds.in

BROWN DIAMOND GRADING REPORT

Report No. 00011100



S. P. GEMS PVT. LTD.
Brown is our Passion



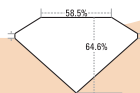
119, Amrli Diamond House, Opera House,
Mumbai - 400 004, India
Tel.: +91 22 2386 4646 / 8103
Fax : +91 22 2386 8103
Call : +91 981 981 41 41
E-mail : info@browndiamonds.in

www.browndiamonds.in

Report No. 00011100

Diamond Description

Shape : Round Brilliant
Weight : 1.07 cts.
Color & Color Hue : C-8, Natural Fancy Vibrant
Raddish Orange Brown
Cut : Good
Polish : Good
Symmetry : Good
Luster : Excellent
Culet : Pointed
Fluorescence : None (FL-0)
Clarity : SI 2
Inclusion Pattern : C 2
Relief of Inclusion : R 3
Table Inclusion : T 3
Black Inclusion : NT-1
Open Inclusion Top : NN
Cop : SM
Pop : SM
Internal Graining : IG-2
Diamond Parameters : 6.4 x 6.3 x 4.1



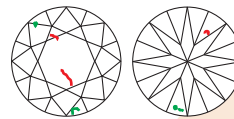
Profile not to actual proportion

www.browndiamonds.in

Naked Eye Appeal : Exclusive



Clarity Diagrams



Feather
Open or Natural
Crystal

Additional Comments

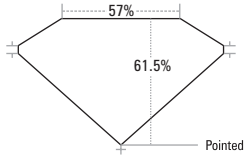
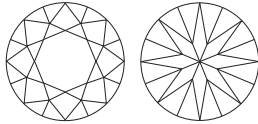


Internal Grainings are not shown

The Description contained in this report is only the Subjective Information or Observation or Evaluation of the Diamonds when checked/graded by S.P. Gems based on its self equipped Grading System to give the customers a reasonable and fair assessment. It is recommended to the customers for their understanding of guidance.



www.browndiamonds.in

www.browndiamonds.in

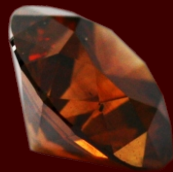
	 <p>Profile not to actual proportion</p>							
	www.browndiamonds.in							
	<p>Naked Eye Appeal : Exclusive Relief Of Inclusion : RO (Minor in Table) Table Inclusion : TO (Minor in Table) Black Inclusion : NtO (Minor in Table) Inclusion Pattern : N/A Opens : <table border="1" style="display: inline-table; vertical-align: middle;"><tr><td>TOP</td><td>COP</td><td>POP</td></tr><tr><td>NN</td><td>NN</td><td>NN</td></tr></table> Internal Graining : IG 1 (Light Internal Graining)</p>		TOP	COP	POP	NN	NN	NN
TOP	COP	POP						
NN	NN	NN						
	 							
	<p>Lot No. 99999  Round 1.06²</p> <p>Cut : Ex Colour : C-8 Polish : Ex Clarity : VVS-1 Symmetry : Ex Parameater : 6.5x6.5x4.0 Flrcnt : None T.Depth : 61.5% Luster : Ex Table : 57%</p> <p>Natural Fancy Vibrant Reddish Orangish brown</p>							

www.browndiamonds.in



S. P. GEMS PVT. LTD.

Brown is our Passion



119, Amrit Diamond House, Opera House,
Mumbai - 400 004, India
Tel.: +91 22 2366 4646 / 8103
Fax : +91 22 2366 8103
Cell : +91 981 981 41 41
E-mail : info@browndiamonds.in
www.browndiamonds.in