


Dell Docking Station – USB 3.0

User Guide



Model: D3100



 **NOTE:** A NOTE indicates important information that helps you make better use of your computer.

 **CAUTION:** A CAUTION indicates potential damage to hardware or loss of data if instructions are not followed.

 **WARNING:** A WARNING indicates a potential for property damage, personal injury, or death.

© 2014 Dell Inc. All rights reserved.

Information in this document is subject to change without notice. Reproduction of these materials in any manner whatsoever without the written permission of Dell Inc. is strictly forbidden.

Trademarks used in this text: Dell and the Dell logo are trademarks of Dell Inc., Intel®, Centrino®, Core™, and Atom™ are either trademarks or registered trademarks of Intel Corporation in the U.S. and other countries; Microsoft®, Windows®, and Windows start button logo are either trademarks or registered trademarks of Microsoft Corporation in the United States and/or other countries; Bluetooth® is a registered trademark owned by Bluetooth SIG, Inc. and is used by Dell under license; Blu-ray Disc™ is a trademark owned by the Blu-ray Disc Association (BDA) and licensed for use on discs and players; Other trademarks and trade names may be used in this document to refer to either the entities claiming the marks and names or their products. Dell Inc. disclaims any proprietary interest in trademarks and trade names other than its own.

Contents

- a. Dell Docking Station – USB 3.0 (D3100)
- b. USB 3.0 I/O cable (2 ft)
- c. Power adapter & power cord
- d. Installation CD
- e. HDMI to DVI adapter



Specifications

Upstream Input

- 1 x USB 3.0 (Standard B Type)

Downstream Outputs

- 3 x USB 3.0
- 2 x USB 2.0
- 1 x DisplayPort
- 2 x HDMI
- Gigabit Ethernet
- Combo Audio (Headphone/Mic)
- Audio line out
- 2 High-powered ports (⚡) for battery charging (BC 1.2).

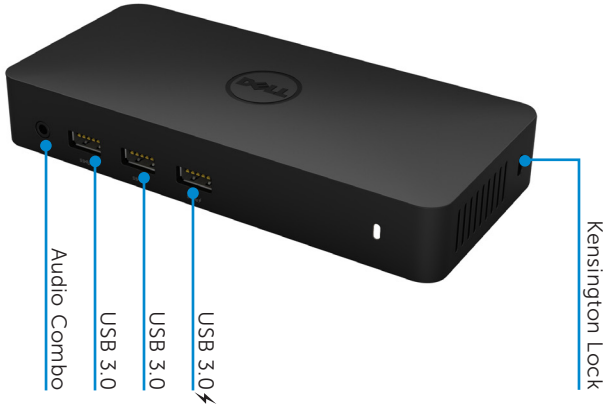
Resolution/Refresh Rate

No. of video ports connected	DP	HDMI 1	HDMI 2
Single	3840 x 2160 / 30Hz	Not connected	Not connected
Single	Not connected	2560 x 1440 / 50Hz	Not connected
Single	Not connected	Not connected	2560 x 1440 / 50Hz
Dual Display	3840 x 2160 / 30Hz	2560 x 1440 / 50Hz	Not connected
Dual Display	3840 x 2160 / 30Hz	Not connected	2560 x 1440 / 50Hz
Dual Display	Not connected	2048 x 1152 / 60Hz	2048 x 1152 / 60Hz
Triple Display	3840 x 2160 / 30Hz	2048 x 1152 / 60Hz	2048 x 1152 / 60Hz

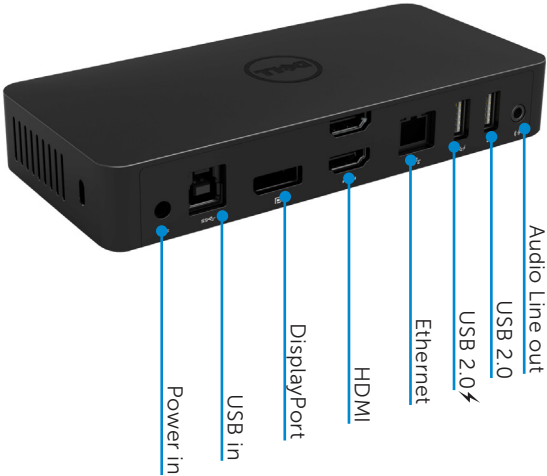
*Resolution supports also dependent on display EDID resolution

Product Overview

Front View



Back View



Recommended System Requirements

Hardware

Processor: Intel Core i7 2+GHz or better

Memory: 8 GB

Video Card: Intel HD 4000, ATI Radeon HD5/6xxx, NVidia GeForce 4xxM or better.

USB: USB 3.0

Disk: 7200 RPM or SSD

Operating System

- Wins OS (Win 7, 8, 8.1) 32/64 bits

Operating Temperature

Max. operating temperature is 40°C

Windows 7/8/8.1 Setup

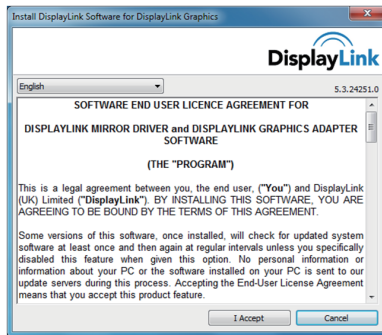
Note: Setup with Bundled CD.

1. Double click on "Setup.exe" when CD is installed.

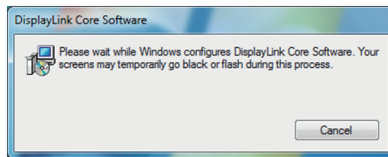


IMPORTANT : DO NOT connect the Docking Station until you have installed the drivers on your laptop.

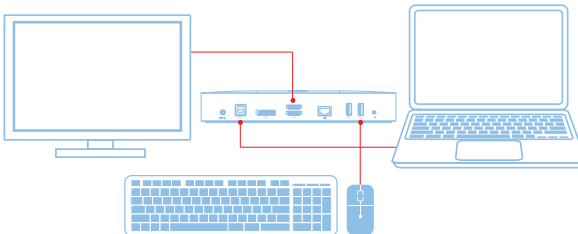
2. Once clicked on "Setup.exe", it will run installation software end user license agreement on the window.



3. Click "I Accept". DisplayLink Core software and DisplayLink Graphics will be installed.



4. Connect your docking station and peripherals to your PC.

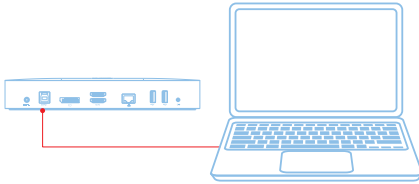


Windows 7/8/8.1 Setup

Note: Setup without Bundled CD

1. Connect the dock to your laptop

Note: It is recommended to download the latest drivers from the DisplayLink support website at www.displaylink.com/support



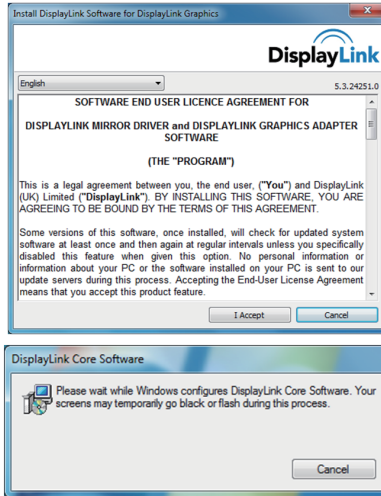
For network/IT administrators, please visit this link for a corporate installation software package. (*User registration required)

<http://www.displaylink.com/corporateinstall/>

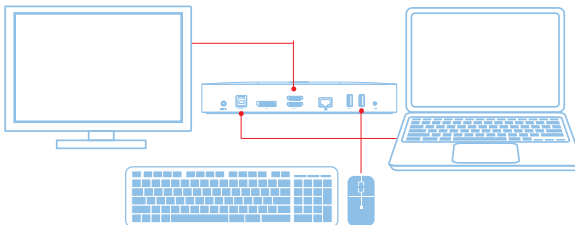
2. Windows will start installing the displaylink Driver Automatically.



3. Follow the screen instructions until the installation is complete.




4. Connect your docking station and peripherals to your PC.



DisplayLink Manager Menu


Menu Option	Description
DisplayLink Manager	Clicking on this item will show the version of DisplayLink software installed.
Check for Updates	Windows update checking.
DisplayLink Devices	Connected DisplayLink devices checking.
Audio Setup	Opens the Windows Audio Configuration Window.
Video Setup	Opens the Windows Screen Resolution window.
Screen Resolution	Displays a list of available resolutions.
Screen Rotation	Rotates the screen in clockwise or counter-clockwise direction.
Extend To	Extends the display to the right or left of the main display.
Extend	Extends the Windows desktop onto the display.
Set as Main Monitor	Sets this screen as the main display.
Notebook Monitor Off	Switches off the display of the notebook and makes the DisplayLink display the main display.
Mirror	Copies what is on the main display and reproduces it on this display.
Off	Switches off the display.
Fit to TV	Use this function to adjust the size of the windows to fit the TV screen.

To set the display into extended mode

1. Click on the DisplayLink icon . 
2. Select Extend.

The device is now extended in the direction it was the last time the display was in this mode. For more control, use the Extend To submenu and select one of the options. This puts the device into extend mode, and places it to the Left/Right/Above/Below the main (primary) monitor.

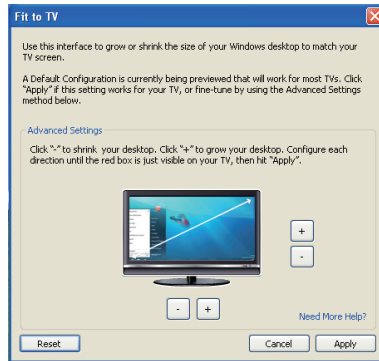
To set the display into mirror mode

1. Click on the DisplayLink icon . 
2. Select Mirror.

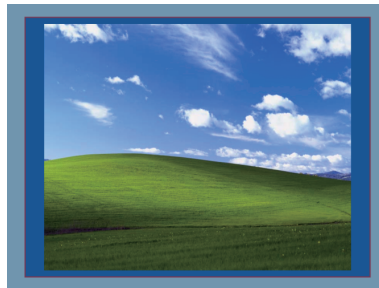
The resolution, colour depth and refresh rate of the primary screen are replicated on the monitor connected to the DisplayLink USB Graphics device.

Fit to TV configuration

1. To configure Fit to TV, choose the option from the DisplayLink GUI.
The following interface appears



2. You will also see a red border on the DisplayLink screen
The red border shows the size of the new Windows desktop. Use the "+" and "-" controls on the Fit to TV GUI to change the size of the red border until it fits on the TV screen.
Note: Finer configuration of the size of the border can be achieved by holding down the CTRL key and clicking the "+" and "-".
3. Once the red border is at the edges of the TV screen, click "Apply" to resize the Windows desktop.



FAQs of Dell Docking Station - USB 3.0 (D3100)

Troubleshooting	Suggested Solutions
There is no video on the monitor attached to the dock	Check the video connection cables. Unplug from the power, wait 10 seconds, and then reconnect.
The video on the attached monitor is distorted or corrupted.	Check video connection cables. Check the video resolution under Control Panel Items\Display\Change Display Setting.
The video on the attached monitor is not displaying in extended mode	Change the settings by either: <ul style="list-style-type: none"> • Configuring under Control Panel Items\Display\Change Display Setting. • Switch by cycling the "Windows Key +P".
The audio jacks are not functioning	Check the settings under Control Panel\All Control Panel Items\Sound to make sure the USB Audio device is available and set to default. Right click to show all available options.
USB ports are not functioning on the docking station	Unplug from the power, wait 10 seconds, and then reconnect. Update to the latest USB 3.0 host controller driver
External USB 3.0 Media Card Reader is not detected.	Unplug from the power, wait 10 seconds, and then reconnect. Update to the latest USB 3.0 host controller driver
HDCP content is not able to display on the attached monitor	HDCP content support is currently not available.
Displaylink Driver not able to install	Get the driver by either: <ul style="list-style-type: none"> • Downloading the latest driver from the Displaylink website. • Connect to Windows Update with Docking station (by using Wi-Fi or Ethernet port of the laptop).
Laptop failed to boot with dock connected	Remove all USB devices connected to the dock; some unqualified boot devices may cause lock up at boot screen.
No CD drive and no Internet access for getting the driver	Get an external CD drive to load the driver from CD Download the driver from an Internet connected computer and copy the driver over USB flash drive, and run the setup..