

# Panasonic®

## Operating Instructions

### Link-to-Cell Cellular Convergence Solution

Model No. **KX-TG7841**  
**KX-TG7842**  
**KX-TG7843**  
**KX-TG7844**  
**KX-TG7845**  
**KX-TG365SK**  
**KX-TG7871**  
**KX-TG7872**  
**KX-TG7873**  
**KX-TG7874**  
**KX-TG7875**  
**KX-TG385SK**



DECT

**6.0**



**Bluetooth®**

Model shown is KX-TG7841.

*Before initial use, see “Getting Started”  
on page 10.*

**Thank you for purchasing a Panasonic product.**

Please read these operating instructions before using the unit and save them for future reference.

**Consulte “Guía Rápida Española”, página 80.**

For assistance, visit our Web site: <http://www.panasonic.com/help> for customers in the U.S.A. or Puerto Rico.

**Please register your product: <http://www.panasonic.com/prodreg>**

## Table of Contents

---

### Introduction

Model composition .....	3
Accessory information .....	3

### Important Information

For your safety .....	6
Important safety instructions .....	7
For best performance .....	7
Other information .....	8
Specifications .....	9

### Getting Started

Setting up .....	10
Intelligent eco mode .....	12
Controls .....	12
Display/Indicators .....	14
Initial settings .....	16

### Link to Cell

Link to cell feature .....	17
Pairing a cellular phone .....	17
Link to cell settings .....	18

### Making/Answering Calls Using the Handset

Making cellular calls .....	21
Making landline calls .....	21
Answering calls .....	22
Useful features during a call .....	22
Power back-up operation for landline .....	25

### Making/Answering Calls Using the Base Unit

Making cellular calls .....	28
Making landline calls .....	28
Answering calls .....	29
Useful features during a call .....	29

### Shared Phonebook

Shared phonebook .....	32
------------------------	----

### Speed Dial

Speed dial .....	35
------------------	----

### Programming

Programmable settings .....	36
Special programming .....	44
Registering a unit .....	47

### Caller ID Service

Using Caller ID service .....	48
Caller list .....	49

### Using Bluetooth Devices

Copying phonebook from a cellular phone (phonebook transfer) .....	52
Text message alert .....	53
Using a Bluetooth wireless headset (optional) for landline calls .....	53

### Answering System for Landline

Answering system for landline .....	56
Turning the answering system on/off .....	56
Greeting message .....	56
Listening to messages using the base unit .....	57
Listening to messages using the handset .....	58
Advanced new message alerting features .....	59
Remote operation .....	60
Answering system settings .....	61

### Voice Mail Service for Landline

Voice mail service for landline .....	63
---------------------------------------	----

### Intercom/Locator

Intercom .....	65
Handset locator .....	65
Transferring calls, conference calls .....	65

### Useful Information

Wall mounting .....	67
Error messages .....	68
Troubleshooting .....	69
FCC and other information .....	77

### Guía Rápida Española

Guía Rápida Española .....	80
----------------------------	----

### Appendix

Customer services .....	90
Warranty (For United States and Puerto Rico) .....	91

### Index

Index .....	93
-------------	----

## Model composition

Series	Model No.	Base unit	Handset	
		Part No.	Part No.	Quantity
KX-TG7841 series	KX-TG7841*1	KX-TG7841	KX-TGA680	1
	KX-TG7842	KX-TG7841	KX-TGA680	2
	KX-TG7843	KX-TG7841	KX-TGA680	3
	KX-TG7844	KX-TG7841	KX-TGA680	4
	KX-TG7845	KX-TG7841	KX-TGA680	5
	KX-TG365SK	KX-TG7841	KX-TGA680	5
KX-TG7871 series*2	KX-TG7871*1	KX-TG7871	KX-TGA680	1
	KX-TG7872	KX-TG7871	KX-TGA680	2
	KX-TG7873	KX-TG7871	KX-TGA680	3
	KX-TG7874	KX-TG7871	KX-TGA680	4
	KX-TG7875	KX-TG7871	KX-TGA680	5
	KX-TG385SK	KX-TG7871	KX-TGA680	5

\*1 Single handset models: Intercom calls can be made between handsets by purchasing and registering one or more optional handsets (page 5).

\*2 The following features are provided for these models:

- USB charging (USB jack is on the left side of the base unit)
- Text message alert feature

## Accessory information

### Supplied accessories

No.	Supplied handset qty.	1 unit*1	2 units*2	3 units*3	4 units*4	5 units*5
	Accessory item/ Order number	Accessory quantity				
①	AC adaptor*6	1	1	1	1	1
②	Telephone line cord/ PQJA10075Z	1	1	1	1	1
③	Desk stand/Wall mounting adaptor*7/PNKL1038Z1	1	1	1	1	1
④	Rechargeable batteries/ HHR-4DPA	2	4	6	8	10
⑤	Handset cover*8/ PNYNTGA680BR	1	2	3	4	5

## Introduction

No.	Supplied handset qty.	1 unit*1	2 units*2	3 units*3	4 units*4	5 units*5
	Accessory item/ Order number	Accessory quantity				
⑥	Belt clip/PNKE1268Z1	1	2	3	3	3
⑦	Charger/PNLC1040ZB	–	1	2	3	4

\*1 KX-TG7841/KX-TG7871

\*2 KX-TG7842/KX-TG7872

\*3 KX-TG7843/KX-TG7873

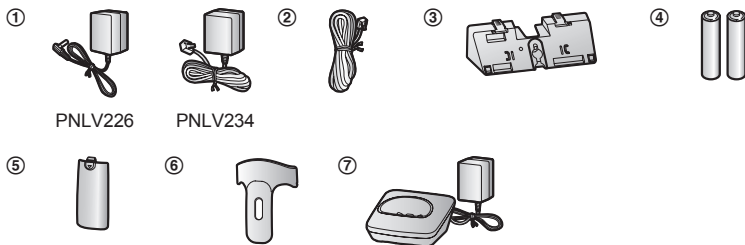
\*4 KX-TG7844/KX-TG7874

\*5 KX-TG7845/KX-TG7875/KX-TG365SK/KX-TG385SK

\*6 PNLV226Z: KX-TG7841/KX-TG7842/KX-TG7843/KX-TG7844/KX-TG7845/KX-TG365SK  
PNLV234Z: KX-TG7871/KX-TG7872/KX-TG7873/KX-TG7874/KX-TG7875/KX-TG385SK

\*7 The desk stand/wall mounting adaptor comes attached to the base unit.

\*8 The handset cover comes attached to the handset.



## Additional/replacement accessories

Please contact your nearest Panasonic dealer for sales information (page 90).

Accessory item	Order number
Rechargeable batteries	HHR-4DPA*1 ● To order, please call 1-800-332-5368 or visit <a href="http://www.panasonic.com/batterystore">http://www.panasonic.com/batterystore</a>
	Battery type: – Nickel metal hydride (Ni-MH) – 2 x AAA (R03) size for each handset
Headset	KX-TCA60, KX-TCA93, KX-TCA400, KX-TCA430
T-adaptor	KX-J66
Range extender	KX-TGA405*2
Key detector	KX-TGA20*3

\*1 Replacement batteries may have a different capacity from that of the supplied batteries.

- \*2 By installing this unit, you can extend the range of your phone system to include areas where reception was previously not available. This product can be purchased online. Please visit our Web site: <http://www.panasonic.com/RangeExtender>
- \*3 By registering the key detector (4 max.) to a Panasonic Digital Cordless Phone and attaching it to an easy-to-lose item in advance, you can locate and find the mislaid item to which the key detector is attached. Please visit our Web site: <http://panasonic.net/pcc/products/telephone/p/tga20/>

## Expanding your phone system

### Handset (optional): KX-TGA680

You can expand your phone system by registering optional handsets (6 max.) to a single base unit.

- Optional handsets may be a different color from that of the supplied handsets.



## Bluetooth® devices

You can expand your phone system by pairing the following units to a single base unit.

**Your Bluetooth cellular phone\*1:** 2 max.  
(for cellular calls: page 17)



**Your Bluetooth headset\*1:** 1 max.  
(for a wireless hands-free conversation: page 53)



- \*1 Your cellular phone and headset must be Bluetooth wireless technology compatible. For more details and the list of compatible cellular phones, please visit our Web site: <http://www.panasonic.com/link2cell>

## Trademarks

- The Bluetooth® word mark and logos are owned by the Bluetooth SIG, Inc. and any use of such marks by Panasonic Corporation is under license. All other trademarks identified herein are the property of their respective owners.

## Important Information

---

### For your safety

To prevent severe injury and loss of life/property, read this section carefully before using the product to ensure proper and safe operation of your product.

---

### WARNING

---

#### Power connection

- Use only the power source marked on the product.
- Do not overload power outlets and extension cords. This can result in the risk of fire or electric shock.
- Completely insert the AC adaptor/power plug into the power outlet. Failure to do so may cause electric shock and/or excessive heat resulting in a fire.
- Regularly remove any dust, etc. from the AC adaptor/power plug by pulling it from the power outlet, then wiping with a dry cloth. Accumulated dust may cause an insulation defect from moisture, etc. resulting in a fire.
- Unplug the product from power outlets if it emits smoke, an abnormal smell, or makes an unusual noise. These conditions can cause fire or electric shock. Confirm that smoke has stopped emitting and contact the Panasonic Call Center at 1-800-211-PANA (1-800-211-7262).
- Unplug from power outlets and never touch the inside of the product if its casing has been broken open.
- Never touch the plug with wet hands. Danger of electric shock exists.

---

#### Installation

- To prevent the risk of fire or electrical shock, do not expose the product to rain or any type of moisture.
- Do not place or use this product near automatically controlled devices such as automatic doors and fire alarms. Radio waves emitted from this product may cause such devices to malfunction resulting in an accident.

- Do not allow the AC adaptor or telephone line cord to be excessively pulled, bent or placed under heavy objects.

---

#### Operating safeguards

- Unplug the product from power outlets before cleaning. Do not use liquid or aerosol cleaners.
- Do not disassemble the product.
- Do not spill liquids (detergents, cleansers, etc.) onto the telephone line cord plug, or allow it to become wet at all. This may cause a fire. If the telephone line cord plug becomes wet, immediately pull it from the telephone wall jack, and do not use.

---

#### Medical

- Consult the manufacturer of any personal medical devices, such as pacemakers or hearing aids, to determine if they are adequately shielded from external RF (radio frequency) energy. (The product operates in the frequency range of 1.92 GHz to 1.93 GHz, and the RF transmission power is 115 mW (max..))
- Do not use the product in health care facilities if any regulations posted in the area instruct you not to do so. Hospitals or health care facilities may be using equipment that could be sensitive to external RF energy.

---

#### CAUTION

---

#### Installation and location

- Never install telephone wiring during an electrical storm.
- Never install telephone line jacks in wet locations unless the jack is specifically designed for wet locations.
- Never touch uninsulated telephone wires or terminals unless the telephone line has been disconnected at the network interface.
- Use caution when installing or modifying telephone lines.
- The AC adaptor is used as the main disconnect device. Ensure that the AC outlet is installed near the product and is easily accessible.
- This product is unable to make calls when:

- the handset batteries need recharging or have failed.
- there is a power failure.

### Battery

- We recommend using the batteries noted on page 4. **USE ONLY rechargeable Ni-MH batteries AAA (R03) size.**
- Do not mix old and new batteries.
- Do not open or mutilate the batteries. Released electrolyte from the batteries is corrosive and may cause burns or injury to the eyes or skin. The electrolyte is toxic and may be harmful if swallowed.
- Exercise care when handling the batteries. Do not allow conductive materials such as rings, bracelets, or keys to touch the batteries, otherwise a short circuit may cause the batteries and/or the conductive material to overheat and cause burns.
- Charge the batteries provided with or identified for use with this product only, in accordance with the instructions and limitations specified in this manual.
- Only use a compatible base unit (or charger) to charge the batteries. Do not tamper with the base unit (or charger). Failure to follow these instructions may cause the batteries to swell or explode.

### Attention:



A nickel metal hydride battery that is recyclable powers the product you have purchased. Please call 1-800-8-BATTERY (1-800-822-8837) for information on how to recycle this battery.

## Important safety instructions

When using your product, basic safety precautions should always be followed to reduce the risk of fire, electric shock, and injury to persons, including the following:

1. Do not use this product near water for example, near a bathtub, washbowl, kitchen sink, or laundry tub, in a wet basement or near a swimming pool.
2. Avoid using a telephone (other than a cordless type) during an electrical storm. There may be a remote risk of electric shock from lightning.
3. Do not use the telephone to report a gas leak in the vicinity of the leak.
4. Use only the power cord and batteries indicated in this manual. Do not dispose of batteries in a fire. They may explode. Check with local codes for possible special disposal instructions.

### SAVE THESE INSTRUCTIONS

## For best performance

### Base unit location/avoiding noise

The base unit and other compatible Panasonic units use radio waves to communicate with each other.

- For maximum coverage and noise-free communications, place your base unit:
  - at a convenient, high, and central location with no obstructions between the handset and base unit in an indoor environment.
  - away from electronic appliances such as TVs, radios, personal computers, wireless devices, or other phones.
  - facing away from radio frequency transmitters, such as external antennas of mobile phone cell stations. (Avoid putting the base unit on a bay window or near a window.)
- Coverage and voice quality depends on the local environmental conditions.

## Important Information

- If the reception for a base unit location is not satisfactory, move the base unit to another location for better reception.

### Environment

- Keep the product away from electrical noise generating devices, such as fluorescent lamps and motors.
- The product should be kept free from excessive smoke, dust, high temperature, and vibration.
- The product should not be exposed to direct sunlight.
- Do not place heavy objects on top of the product.
- When you leave the product unused for a long period of time, unplug the product from the power outlet.
- The product should be kept away from heat sources such as heaters, kitchen stoves, etc. It should not be placed in rooms where the temperature is less than 0 °C (32 °F) or greater than 40 °C (104 °F). Damp basements should also be avoided.
- The maximum calling distance may be shortened when the product is used in the following places: Near obstacles such as hills, tunnels, underground, near metal objects such as wire fences, etc.
- Operating the product near electrical appliances may cause interference. Move away from the electrical appliances.

### Routine care

- **Wipe the outer surface of the product with a soft moist cloth.**
- Do not use benzine, thinner, or any abrasive powder.

### Other information

**CAUTION:** Risk of explosion if battery is replaced by an incorrect type. Dispose of used batteries according to the instructions.

### Notice for product disposal, transfer, or return

- This product can store your private/confidential information. To protect your privacy/confidentiality, we recommend that you erase information such as phonebook or caller list entries from the memory before you dispose of, transfer, or return the product.

### Notice

- This product is designed for use in the United States of America. Sale or use of this product in other countries may violate local laws.
- Cet appareil est conçu pour être utilisé aux États-Unis d'Amérique. La vente ou l'emploi de cet appareil dans certains autres pays peut constituer une infraction à la législation locale.
- Este producto está diseñado para usarse en los Estados Unidos de América. La venta o el empleo de este producto en ciertos países puede constituir violación de la legislación local.
- 本產品專為美國使用而設。若在其他國家銷售或使用，可能會違反當地法例。
- この製品は、日本国外での使用を目的として設計されており、日本国内での使用は法律違反となります。従って、当社では日本国内においては原則として修理などのサービスは致しかねます。

### ENERGY STAR (for KX-TG7841 series)

As an ENERGY STAR® Partner, Panasonic has determined that this product meets the ENERGY STAR guidelines for energy efficiency. ENERGY STAR is a U.S. registered mark.





## **Specifications**

- **Standard:**  
DECT 6.0 (Digital Enhanced  
Cordless Telecommunications 6.0)  
Bluetooth wireless technology 2.0
  - **Frequency range:**  
1.92 GHz to 1.93 GHz (DECT)  
2.402 GHz to 2.48 GHz (Bluetooth)
  - **RF transmission power:**  
115 mW (max.)
  - **Power source:**  
120 V AC, 60 Hz
  - **Power consumption:**  
**Base unit:\*1**  
Standby: Approx. 1.2 W  
Maximum: Approx. 4.5 W  
**Base unit:\*2**  
Standby: Approx. 1.2 W  
Maximum: Approx. 8.5 W  
**Charger:**  
Standby: Approx. 0.1 W  
Maximum: Approx. 1.8 W
  - **USB Charger:\*2**  
Output voltage: DC 5 V  
Output current: 500 mA
  - **Operating conditions:**  
0 °C – 40 °C (32 °F – 104 °F), 20 % – 80 %  
relative air humidity (dry)
- \*1 KX-TG7841 series: page 3  
\*2 KX-TG7871 series: page 3

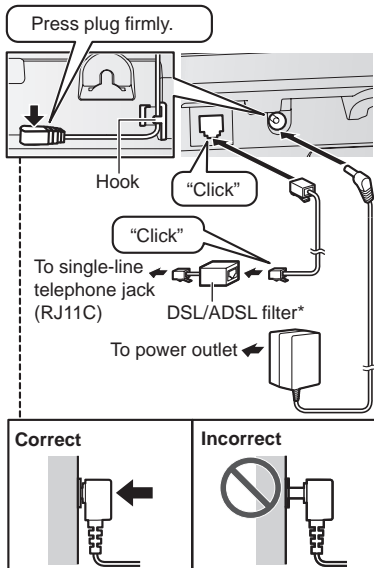
### **Note:**

- Design and specifications are subject to change without notice.
- The illustrations in these instructions may vary slightly from the actual product.

## Setting up

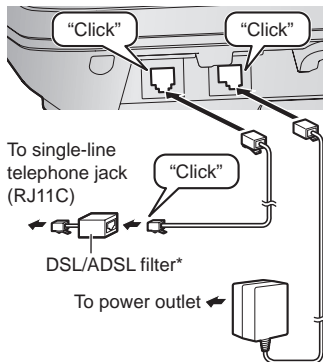
### Connections

- If you do not connect the telephone line cord and use only cellular lines, set the cellular line only mode to use this unit more conveniently (page 19).
- **Base unit (KX-TG7841 series: page 3)**
- Use only the supplied Panasonic AC adaptor PNLV226.



\*DSL/ADSL filter (not supplied) is required if you have DSL/ADSL service.

- **Base unit (KX-TG7871 series: page 3)**
- Use only the supplied Panasonic AC adaptor PNLV234.
- The hook of the base unit is not designed to hold the AC adaptor cord for the desk stand or wall mounting use (page 67).



\*DSL/ADSL filter (not supplied) is required if you have DSL/ADSL service.

### Charger

